

# Brads 12

## UTILIZZI APPLICATIONS

Modanatura su mobili e serramenti, assemblaggio di armadietti e cassetti, costruzione di barche, fissaggio battiscopa, coprifili a parete, perlinati, produzione di calzature, assemblaggio pannelli e cornici, pannelli di tappezzeria o in legno, finiture decorative interne, fissaggio cornici ferma vetro.

Furniture, doors and windows beading, cabinets and drawers assembling, boats construction, skirting board fixing, wire covers, matchboarding, shoemaking, panels and frames assembling, upholstered and trim panels, decorative trims, glazing applications.

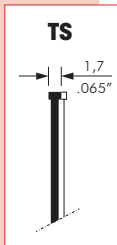
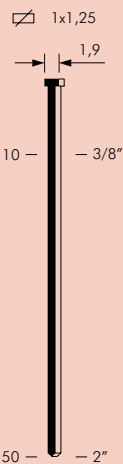
## SPECIFICHE SPECIFICATIONS

Punti per barretta 100  
Brads per strip 100

Finitura zincato  
Finishing galvanized

A richiesta testa verniciata, testa piccola (1,7), inox, alluminio painted head, slight head (.065"), stainless steel, aluminium

On request



Gauge: 18  
Head width: .075"



Serie e identificazione (Dati anagrafici)	modello	misure impiegate (mm)	capacità caricatore (n.punti)	pressione (kg/cm <sup>2</sup> )	peso (kg)	consumo aria (litri/colpo)	dimensioni (mm - L x W x H)
	model	applicable sizes (inch)	magazine capacity (pieces)	pressure (PSI)	weight (lbs)	air consumption (ft <sup>3</sup> /cycle)	dimensions (inch - L x W x H)



**12.28**

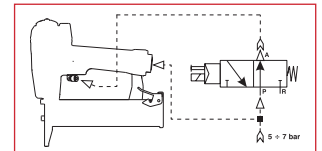


Versione D - D model

MINI	12.28	10 ÷ 28	100	4,5 ÷ 6	1,04	0,15	226 x 43 x 162
		3/8" ÷ 1-1/8"	100	65 ÷ 90	2,29	0,0053	8-7/8" x 1-11/16" x 6-3/8"
	12.28 D	10 ÷ 28	100	4,5 ÷ 6	1,10	0,15	226 x 43 x 182
		3/8" ÷ 1-1/8"	100	65 ÷ 90	2,42	0,0053	8-7/8" x 1-11/16" x 7-3/16"



**12.40**



Versione CD - CD model

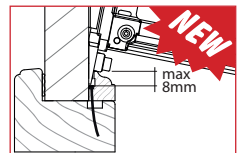


Versione D - D model

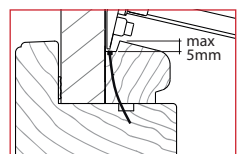
220	12.40	12 ÷ 40	100	5 ÷ 7,5	1,15	0,34	226 x 50 x 223
		1/2" ÷ 1-9/16"	100	70 ÷ 105	2,54	0,012	8-15/16" x 2" x 8-3/4"
220	12.40 D	12 ÷ 40	100	5 ÷ 7,5	1,28	0,34	226 x 50 x 226
		1/2" ÷ 1-9/16"	100	70 ÷ 105	2,82	0,012	8-15/16" x 2" x 8-7/8"
220	12.40 SQ	12 ÷ 40	100	5 ÷ 7,5	1,15	0,34	226 x 50 x 223
		1/2" ÷ 1-9/16"	100	70 ÷ 105	2,54	0,012	8-15/16" x 2" x 8-3/4"
220	12.40 FQ	12 ÷ 40	100	5 ÷ 7,5	1,28	0,34	226 x 50 x 226
		1/2" ÷ 1-9/16"	100	70 ÷ 105	2,82	0,012	8-15/16" x 2" x 8-7/8"



**12.40 G**



Versione G4 - G4 model



Versione G - G model

220	12.40 G	25 ÷ 40	100	5 ÷ 7	1,25	0,34	252 x 52 x 228
		1" ÷ 1-9/16"	100	70 ÷ 100	2,76	0,012	9-15/16" x 2-1/16" x 9"
	12.40 G4	25 ÷ 40	100	5 ÷ 7	1,25	0,34	245 x 52 x 228
		1" ÷ 1-9/16"	100	70 ÷ 100	2,76	0,012	9-5/8" x 2-1/16" x 9"

# Brads 12

## UTILIZZI APPLICATIONS

Modanatura su mobili e serramenti, assemblaggio di armadietti e cassetti, costruzione di barche, fissaggio battiscopa, coprifili a parete, perlinati, produzione di calzature, assemblaggio pannelli e cornici, pannelli di tappezzeria o in legno, finiture decorative interne, fissaggio cornici ferma vetro.

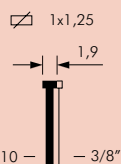
Furniture, doors and windows beading, cabinets and drawers assembling, boats construction, skirting board fixing, wire covers, matchboarding, shoemaking, panels and frames assembling, upholstered and trim panels, decorative trims, glazing applications.

## SPECIFICHE SPECIFICATIONS

Punti per barretta 100  
Brads per strip 100

Finitura zincato  
Finishing galvanized

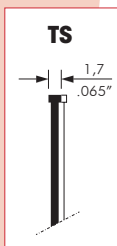
A richiesta testa verniciata, testa piccola (1,7), inox, alluminio  
On request painted head, slight head (.065"), stainless steel, aluminium



10 — — 3/8"

50 — — 2"

Gauge: 18  
Head width: .075"



Series	modello	misure impiegabili (mm)	capacità caricatore (n.punti)	pressione (kg/cm <sup>2</sup> )	peso (kg)	consumo aria (litri/colpo)	dimensioni (mm - L x W x H)
220	model	applicabile sizes (inch)	magazine capacity (pieces)	pressure (PSI)	weight (lbs)	air consumption (ft <sup>3</sup> /cycle)	dimensions (inch - L x W x H)



**12.40 CL2-5**



Versione 51 (sicura frontale)  
51 model (frontal safety)

220	12.40 CL2-5	12 ÷ 40	210	5 ÷ 7,5	1,64	0,34	365 x 50 x 222
		1/2" ÷ 1-9/16"	210	70 ÷ 105	3,62	0,012	14-3/8" x 2" x 8-3/4"
	12.40 CL2-51	12 ÷ 40	210	5 ÷ 7,5	1,64	0,34	365 x 50 x 222
		1/2" ÷ 1-9/16"	210	70 ÷ 105	3,62	0,012	14-3/8" x 2" x 8-3/4"



**12.25 CLT3**

220	12.25 CLT3	13 ÷ 25	300	5 ÷ 7,5	2,20	0,34	500 x 50 x 220
		1/2" ÷ 1"	300	70 ÷ 105	4,85	0,012	19-11/16" x 2" x 8-11/16"



**12.50**

420	12.50	20 ÷ 50	110	5 ÷ 7,5	1,35	0,54	229 x 58 x 250
		3/4" ÷ 2"	110	70 ÷ 105	2,98	0,01906	9-1/16" x 2-5/16" x 9-7/8"