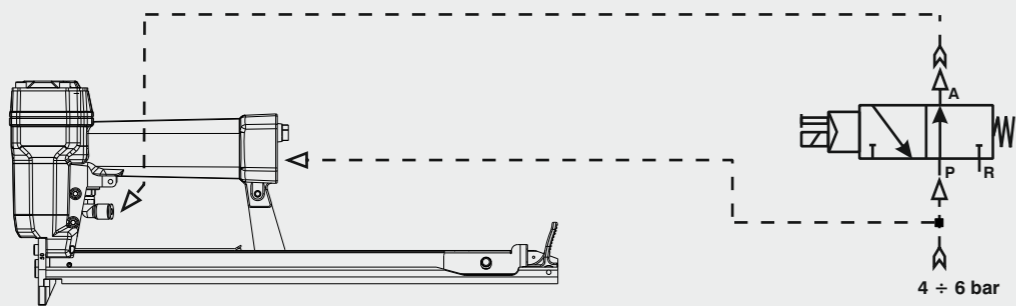


## Collegamento - Connection

Collegamento:  
Connection:

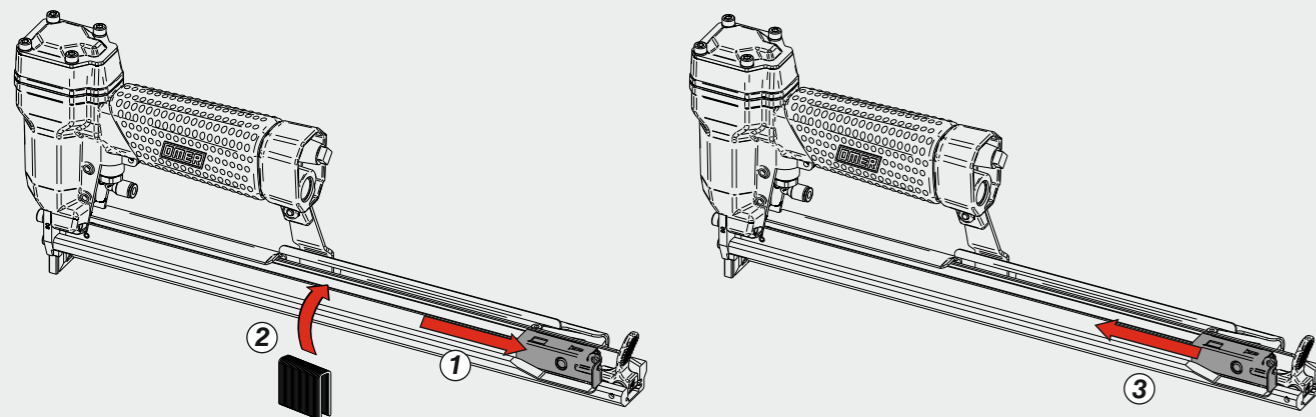
Valvola 3/2 NA  
Valve 3/2 NO



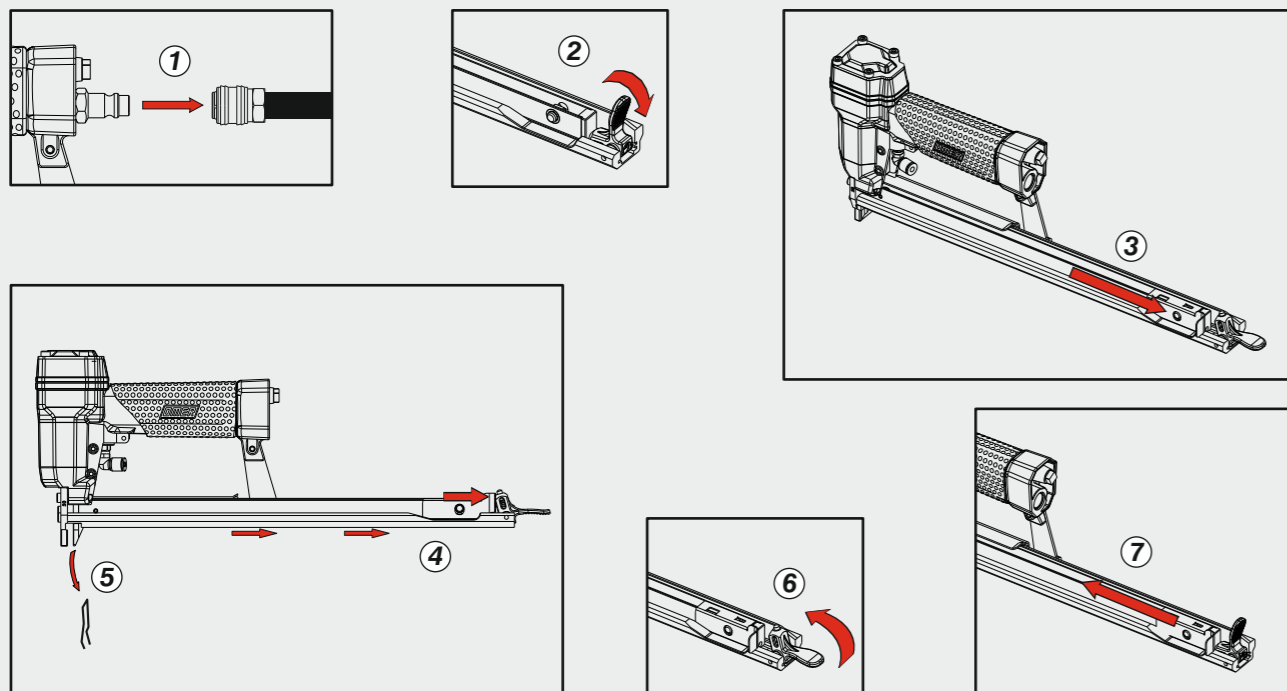
4 ÷ 6 bar

Caricamento - Loading - Laden - Chargement - Carga - Γέμισμα - Carregamento - Laden - Yükleme - Laddning - Plnění - Plnenie

Caricamento da sopra  
Top load magazine



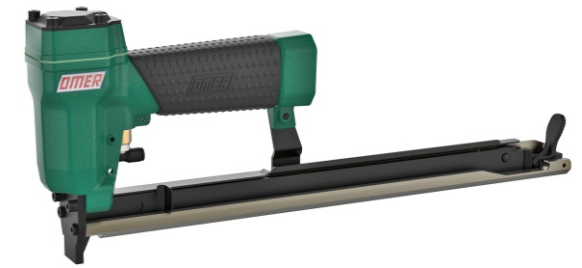
Disincerramento - Jam clearing - Staubeseitigung - Décoincement - Desatascamiento - Απεμπλοκή - Desencravamento  
Deblokkering bij vastlopen - Sikişma giderme - Rensning av igensättningar - Uvolnění - Uvolnenie



# OMER

Manuale d'uso, manutenzione e parti di ricambio  
Manual for use, maintenance and spare parts  
Bedienungs- und Wartungshandbuch sowie Ersatzteilleiste  
Mode d'emploi, de maintenance et pièces de rechange  
Manual de uso, mantenimiento y recambios  
Εγχειρίδιο χρήσης, συντήρησης και ανταλλακτικών  
Manual de uso, manutenção e peças sobresselentes  
Handleiding voor gebruik, onderhoud en wisselstukken  
Kullanım, bakım ve yedek parça kılavuzu  
Användar-, underhålls- och reservdelshandbok  
Návod k používání a údržbě a náhradní díly  
Návod na obsluhu, údržbu a náhradné diely

Parte 2  
Part 2  
Teil 2  
Partie 2  
Part 2  
Μέρος 2  
Parte 2  
Deel 2  
Kisim 2  
Del 2  
Část 2  
Čast 2



## 50.16 CLT

cod. 11567540



### Dati tecnici

Technical data  
Technische Daten  
Tehniska data

### Caractéristiques techniques

Datos técnicos  
Τεχνικά χαρακτηριστικά  
Technické údaje

### Dados técnicos

Technische gegevens  
Teknik veriler  
Technické údaje

### Misure impiegabili

Lengths  
Verwendbare Nagellänge  
Dimensioner som kan användas

Dimensions utiles  
Medidas de longitud  
Μήκος Αναλωσίμου  
Příпустné rozměry

Medidas utilizáveis  
Toepasbare afmetingen  
Boy  
Použitelné rozmery

mm  
inch

4 ÷ 16  
5/32" ÷ 5/8"

Capacità caricatore n° punti  
Magazine capacity  
Magazinkapazität Nägel  
Magasinkapacitet Antal punkter

Capacité chargeur n° de points  
Capacidad cargador n° puntos  
Δυνατότητα γεμιστέρα  
Kapacita zásobníku p. sponek

Capacidade carregador n° pontos  
Capaciteit magazijn in aantal spijkers  
Dergi kapasitesi  
Kapacita zásobníka p. spôn

210

### Pressione d'esercizio

Operating pressure  
Betriebsdruck  
Drifttryck

Pression d'exercice  
Presión de servicio  
Πίεση λειτουργίας  
Pracovní tlak

Pressão de serviço  
Werkdruk  
Çalışma basıncı  
Prevádzkový tlak

bar  
psi

4 ÷ 6  
60 ÷ 90

### Consumo aria

Air consumption  
Luftverbrauch  
Luftförbrukning

Consommation d'air  
Consumo aire  
Κατανάλωση αέρα  
Spotreba vzduchu

Consumo ar  
Luchtverbruik  
Hava tüketimi  
Spotreba vzduchu

lt/colpo  
ft<sup>3</sup>/cycle

0,13  
0,00459

### Peso

Weight  
Gewicht  
Vikt

Poids  
Peso  
Βάρος  
Hmotnost

Peso  
Gewicht  
Ağırlık  
Hmotnost

kg  
lbs

1,17  
2,58

### Dimensioni

Dimensions  
Abmessungen  
Dimensioner (AxBxH)

Dimensions  
Dimensiones  
Διαστάσεις  
Rozměry

Dimensões  
Afmetingen  
Boyutlar  
Rozmery

mm  
inch

378x43x148  
14-7/8"x1-11/16"x5-13/16"

(LxWxH)

EN 12549 :2009 EN ISO 3746 :2011 EN ISO 4871 :2009

### Potenza sonora emessa

Sound power emitted  
Emitierte Schalleistung  
Avgiven ljudeffekt

Puissance sonore émise  
Potencia sonora emitida  
Εκπεμπόμενη ηχητική ισχύς  
Emitovaný akustický tlak

Potência sonora emitida  
Geëmitteerd geluidsvermogen  
Çıkan ses gücü (ses desibeli)  
Výstupný akustický výkon

dB(A)

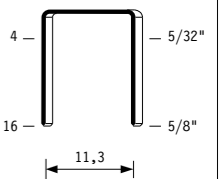
87

(K = 4 dB)

Tipo di punto  
Type of fastener  
Befestigungsmittel  
Tipo de rivet  
Tipo de punto  
Τύπος αναλωσίμου  
Tipo de agrafó  
Type nietjes  
Zimba ve çivi tipleri  
Typ av stygn  
Typ sponky  
Typ sponky

50

0,50x1,25

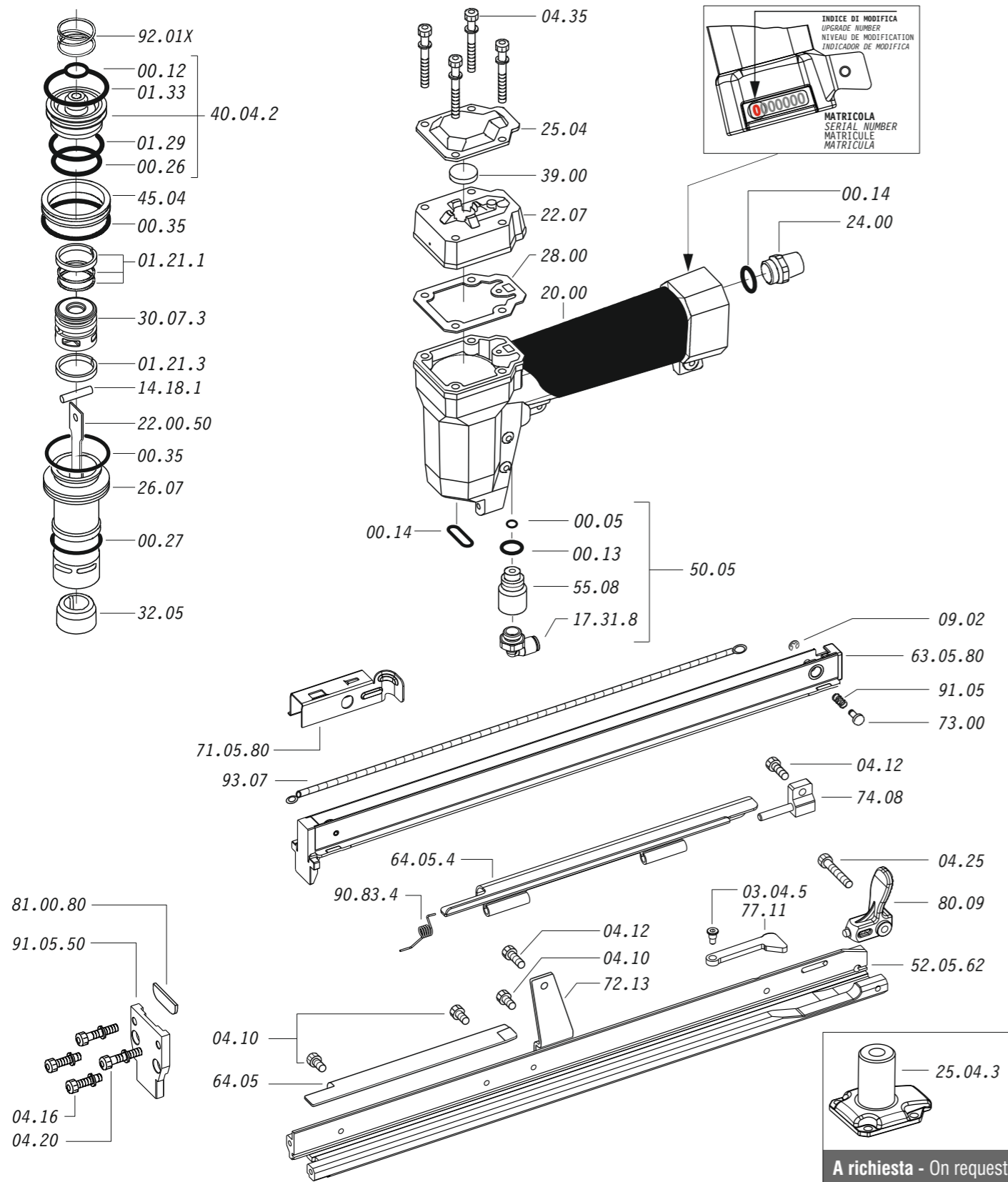


Crown: .484" (1/2")  
Gauge: 20

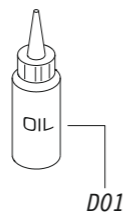
11567540\_5016CLT\_5\_rev22\_26/02/2026 MH

DO NOT  
HANDHELD  
THIS TOOL





Dotazioni - Equipment - Ausstattung - Outillage - Dotaciones - Εξοπλισμός  
Dotações - Uitrusting - Donanımlar - Utrustning - Vybavení - Vybava

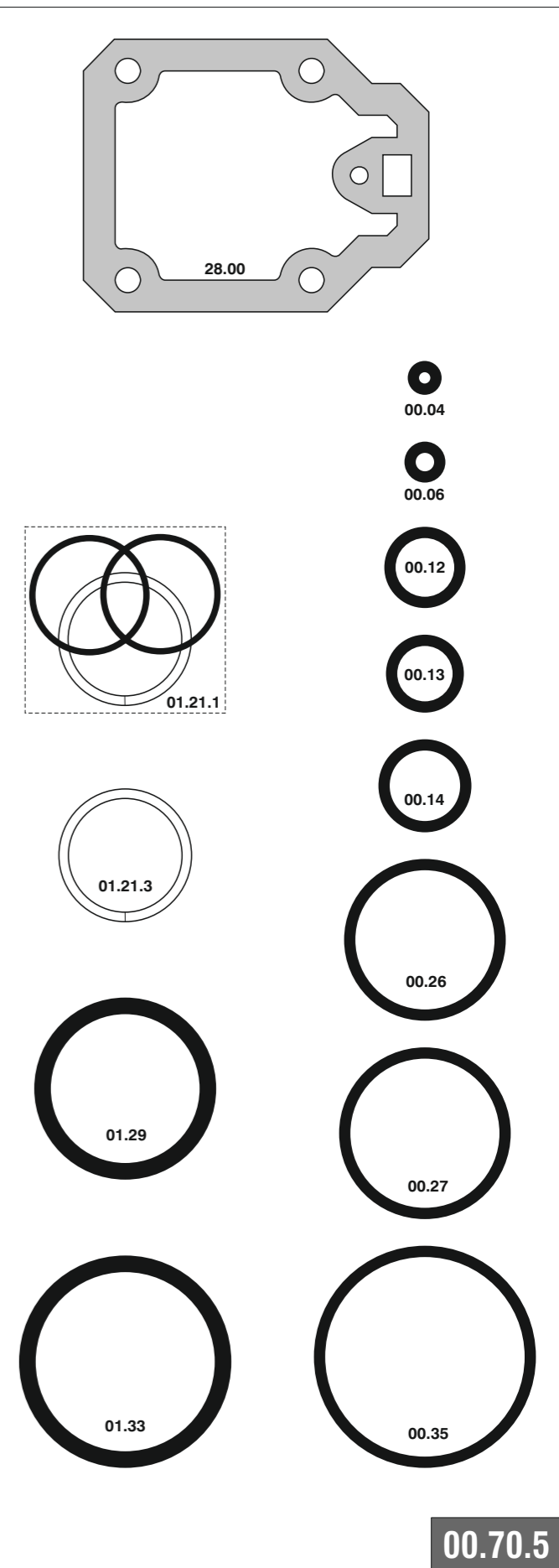


**50.16 CLT**

cod. 11567540

Cod.	Descrizione	Description
00.05	O-Ring	O-Ring
00.12	O-Ring	O-Ring
00.13	O-Ring	O-Ring
00.14	O-Ring	O-Ring
00.26	O-Ring	O-Ring
00.27	O-Ring	O-Ring
00.35	O-Ring	O-Ring
01.21.1	Guarnizione	Gasket
01.21.3	Guarnizione	Gasket
01.29	O-Ring	O-Ring
01.33	O-Ring	O-Ring
03.04.5	Vite	Screw
04.10	Vite	Screw
04.12	Vite	Screw
04.16	Vite	Screw
04.20	Vite	Screw
04.25	Vite	Screw
04.35	Vite	Screw
07.30	Chiave esagonale	Hex. bar wrench
09.02	Anello elastico	Elastic ring
14.18.1	Spina	Pin
17.31.8	Attacco	Connection
20.00	Corpo	Body
22.07	Testa	Head
24.00	Silenziatore	Silencer
25.04	Deflettore	Exhaust deflector
25.04.3	Supporto	Support
26.07	Cilindro	Cylinder
28.00	Guarnizione	Gasket
30.07.3	Pistone	Piston
32.05	Ammortizzatore	Bumper
39.00	Guarnizione scarico	Exhaust gasket
40.04.2	Valvola completa	Valve ass'y
45.04	Anello valvola	Ring
50.05	Comando a distanza	Remote control trigger
55.08	Raccordo	Bush
64.05	Carter	Hold down
64.05.4	Carter mobile	Hold down
77.11	Leva	Lever
72.13	Reggicaricatore	Support
73.00	Perno	Pin
74.08	Staffa	Support
80.09	Grilletto chiusura	Trigger
91.05	Molla	Spring
90.83.4	Molla	Spring
92.01X	Molla	Spring
93.07	Molla	Spring
22.00.50	Battente	Driver
52.05.62	Caricatore	Magazine
63.05.80	Carrello	Slider
71.05.80	Spingipunto	Pusher
81.00.80	Controtestina	Nose
91.05.50	Testina	Nose plate
D01	Bocchetta olio	Oiler

Guarnizioni - O-Rings - Dichtungen - Juntas - Δακτύλιος στεγανοποίησης  
Vedantes - O-ringen - Contalar - O-ringar - Těsnění - Tesnenia



**50.16 CLT**

cod. 11567540

Indice di modifica  
Upgrade number

**5**