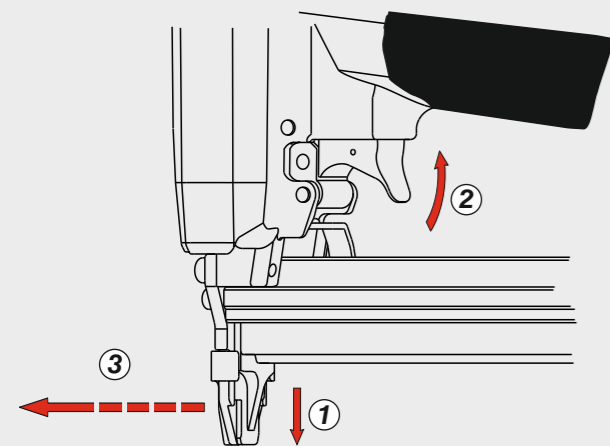
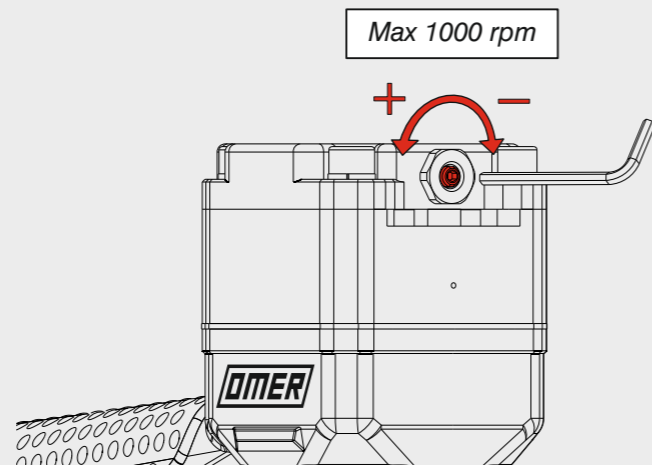


Azionamento a contatto continuo
 Continual contact actuation

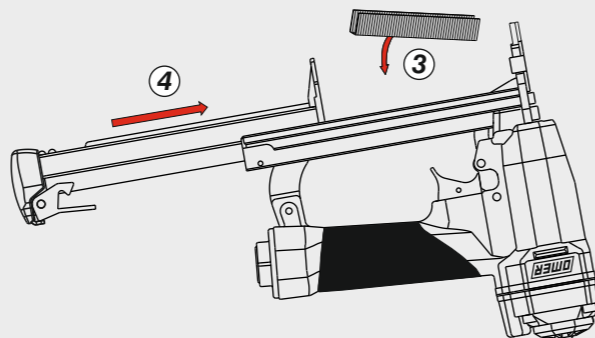
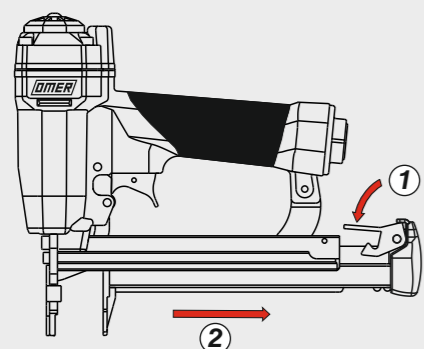


Regolazione della velocità
 Speed adjustment

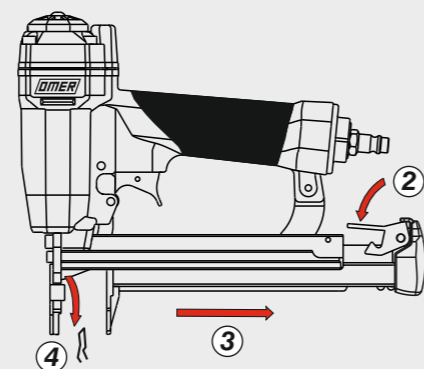
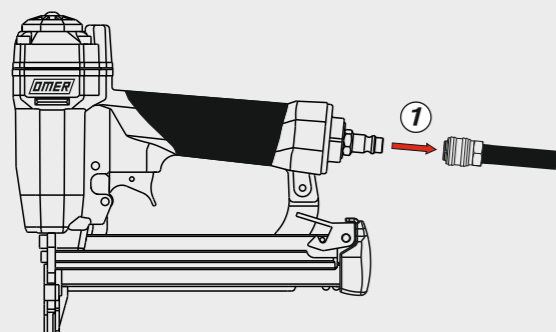


Caricamento - Loading - Laden - Chargement - Carga - Γέμισμα - Carregamento - Laden - Yükleme - Laddning - Plnění - Plnenie

Caricamento da sotto
 Bottom load magazine



Disincerramento - Jam clearing - Staubeseitigung - Décoincement - Desatascamiento - Απεμπλοκή
 Desencravamento - Deblokkering bij vastlopen - Sıkışma giderme - Rensning av igensättningar



Manuale d'uso, manutenzione e parti di ricambio	Parte 2
Manual for use, maintenance and spare parts	Part 2
Bedienungs- und Wartungshandbuch sowie Ersatzteilliste	Teil 2
Mode d'emploi, de maintenance et pièces de rechange	Partie 2
Manual de uso, mantenimiento y recambios	Part 2
Εγχειρίδιο χρήσης, συντήρησης και ανταλλακτικών	Μέρος 2
Manual de uso, manutenção e peças sobresselentes	Parte 2
Handleiding voor gebruik, onderhoud en wisselstukken	Deel 2
Kullanım, bakım ve yedek parça kılavuzu	Kısım 2
Användar-, underhålls- och reservdelshandbok	Del 2
Návod k používání a údržbě a náhradní díly	Část 2
Návod na obsluhu, údržbu a náhradné diely	Časť 2



90.28 CLV

cod. 12270580



Warning: Please read the instructions and warnings for this tool carefully before use. Failure to do so could lead to serious injury.

Dati tecnici

Technical data
 Technische Daten
 Tehniska data

Caractéristiques techniques

Datos técnicos
 Τεχνικά χαρακτηριστικά
 Technické údaje

Dados técnicos

Technische gegevens
 Teknik veriler
 Technické údaje

Misure impiegabili

Lengths
 Verwendbare Nagellänge
 Dimensioner som kan användas

Dimensions utiles

Medidas de longitud
 Μήκος Αναλωσίμου
 Pripustné rozměry

Medidas utilizáveis

Toepasbare afmetingen
 Boy
 Použitelné rozmery

mm 9 + 28
inch 3/8" + 1-1/8"

Capacità caricatore n° punti

Magazine capacity
 MagazinKapazität Nägel
 Magasinkapacitet Antal punkter

Capacité chargeur n° de points

Capacidad cargador n° puntos
 Δυνατότητα γεμιστερα
 Kapacita zásobníku p. sponek

Capacidade carregador n° pontos

Capaciteit magazijn in aantal spijkers
 Dergi kapasitesi
 Kapacita zásobníka p. spon

100

Pressione d'esercizio

Operating pressure
 Betriebsdruck
 Driftryck

Pression d'exercice

Presión de servicio
 Πίεση λειτουργίας
 Pracovní tlak

Pressão de serviço

Werkdruk
 Çalışma basıncı
 Prevádzkový tlak

bar 5 + 7,5
psi 70 + 105

Consumo aria

Air consumption
 Luftverbrauch
 Luftförbrukning

Consommation d'air

Consumo aire
 Κατανάλωση αέρα
 Spotreba vzduchu

Consumo ar

Luchtverbruik
 Hava tüketimi
 Spotreba vzduchu

lt/colpo 0,31
ft³/cycle 0,01095

Peso

Weight
 Gewicht
 Vikt

Poids

Peso
 Βάρος
 Hmotnost

Peso

Gewicht
 Ağırlik
 Hmotnost

kg 1,60
lbs 3,52

Dimensioni

Dimensions
 Abmessungen
 Dimensioner (AxBxH)

Dimensions

Dimensiones
 Διαστάσεις
 Rozměry

Dimensões

Afmetingen
 Boyutlar
 Rozmery

mm 394x50x211
inch 15-1/2"x2"x8-5/16"
 (LxWxH)

EN 12549 :2009 EN ISO 4871 :2009

Pressione sonora in pos. operatore

Sound pressure in operator's position
 Schalldruck am Arbeitsplatz
 Ljudtryck på operatörsplatsen

Pression sonore poste Opérateur

Presión sonora en la pos. del operador
 Ηχητική πίεση στη θέση του χειριστή
 Akustický tlak v místě obsluhy

Pressão sonora na posição Operador

Geeluidsdruk op de werkplaats
 Οργανισμός πίεση στη θέση του χειριστή
 Akustický tlak v mieste obsluhy

dB(A) 82

(K = 4 dB)

EN 12549 :2009 EN ISO 3746 :2011 EN ISO 4871 :2009

Potenza sonora emessa

Sound power emitted
 Emittierte Schalleistung
 Avgiven ljudeffekt

Puissance sonore émise

Potencia sonora emitida
 Εκπεμπόμενη ηχητική ισχύς
 Emitovaný akustický tlak

Potência sonora emitida

Geëmitteerd geluidsvermogen
 Çıkan ses gücü (ses desibeli)
 Výstupný akustický výkon

dB(A) 90

(K = 4 dB)

CEN ISO/TS 8662-11 :2006 EN ISO 5349-2 :2004 EN 12096 :1999

Emissione vibratoria sull'impugnatura

Vibratory emissions on handle
 Vibrationsmission am Griff
 Vibrationsemission på handtaget

Émission vibratoire sur la prise en main

Emisión de vibraciones en la empuñadura
 Εκπεμπόμενες δονήσεις στη λαβή
 Emise vibrací na rukojet

Emissão vibratória na empunhadura

Trillingsemissie op de handgreep
 Tutamak üzerindeki vibrasyon emisyonları
 Emisje vibráci na rukováti

m/s² 4,30

(K = 2 m/s²)

Tipo di punto

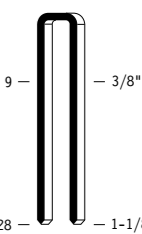
Type of fastener
 Befestigungsmittel
 Type de rivet
 Tipo de punto

Τύπος αναλωσίμου
 Tipo de agrafó
 Type nietjes
 Zimba ve çivi tipleri

Typ av stygn
 Typ sponky
 Typ spony

90

1,00x1,25

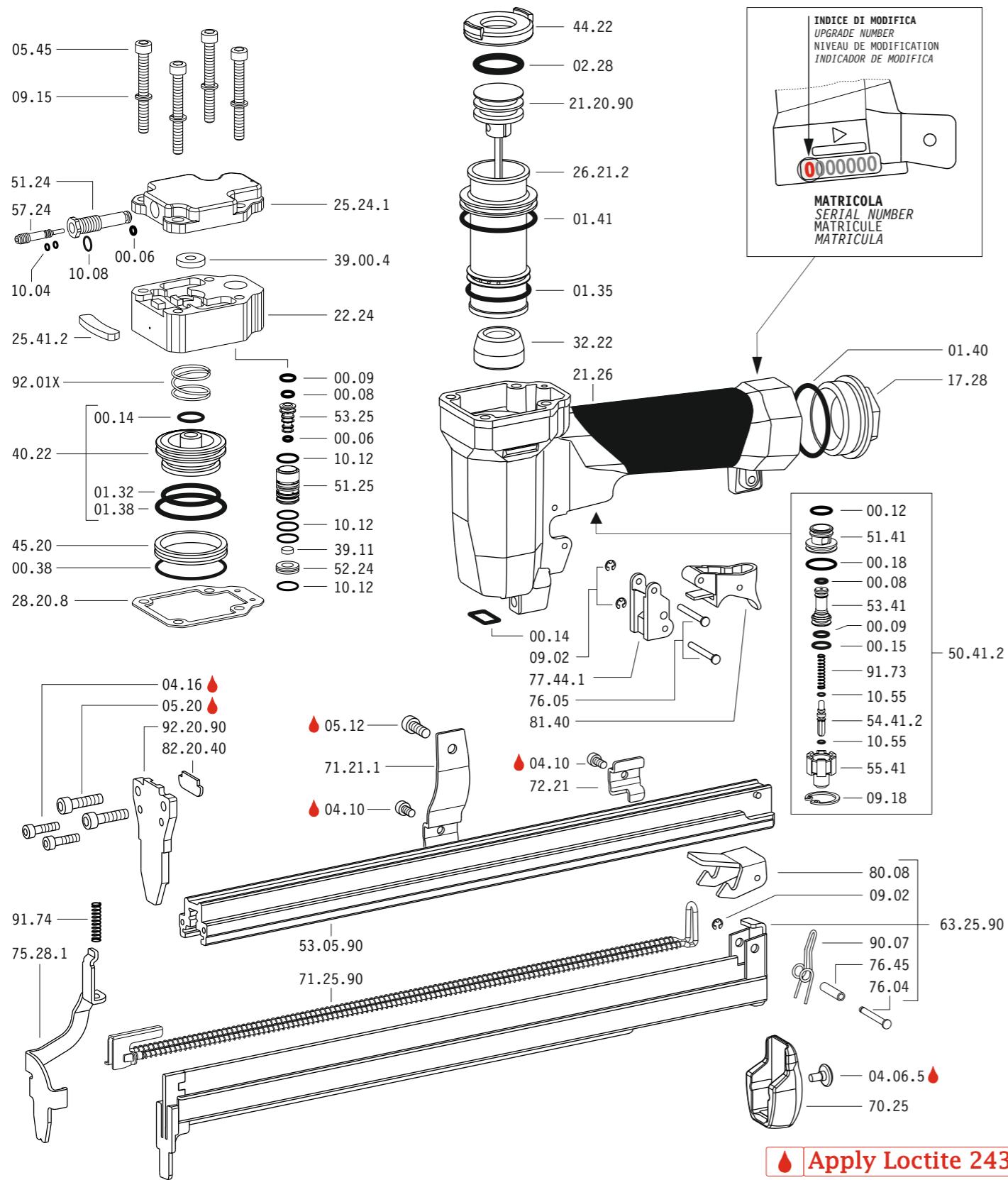


28 - 1-1/8"

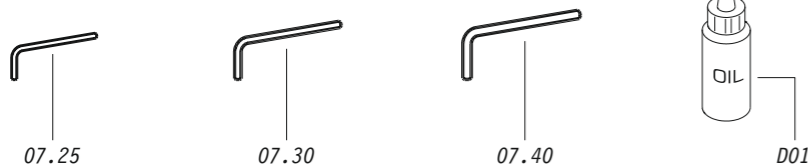
3,5

Crown: .217" (1/4")

Gauge: 18



Dotazioni - Equipment - Ausstattung - Outillage - Dotaciones - Εξοπλισμός
Dotações - Uitrusting - Donanımlar - Utrustning - Vybavení - Vybava



90.28 CLV

cod. 12270580

Cod.	Descrizione	Description
00.06	O-Ring	O-Ring
00.08	O-Ring	O-Ring
00.09	O-Ring	O-Ring
00.12	O-Ring	O-Ring
00.14	O-Ring	O-Ring
00.15	O-Ring	O-Ring
00.18	O-Ring	O-Ring
00.38	O-Ring	O-Ring
01.32	O-Ring	O-Ring
01.35	O-Ring	O-Ring
01.38	O-Ring	O-Ring
01.40	O-Ring	O-Ring
01.41	O-Ring	O-Ring
02.28	O-Ring	O-Ring
04.06.5	Vite	Screw
04.10	Vite	Screw
04.16	Vite	Screw
05.12	Vite	Screw
05.20	Vite	Screw
05.45	Vite	Screw
07.25	Chiave esagonale	Hex. bar wrench
07.30	Chiave esagonale	Hex. bar wrench
07.40	Chiave esagonale	Hex. bar wrench
09.02	Anello elastico	Elastic ring
09.15	Rondella	Washer
09.18	Anello elastico	Elastic ring
10.04	O-Ring	O-Ring
10.08	O-Ring	O-Ring
10.12	O-Ring	O-Ring
10.55	O-Ring	O-Ring
17.28	Tappo	Inlet cap
21.26	Corpo	Body
22.24	Testa	Head
25.24.1	Deflettore	Exhaust deflector
25.41.2	Silenziatore	Silencer
26.21.2	Cilindro	Cylinder
28.20.8	Guarnizione testa	Head gasket
32.22	Ammortizzatore	Bumper
39.00.4	Guarnizione scarico	Exhaust seal
39.11	Guarnizione	Seal
40.22	Valvola completa	Valve ass'y
44.22	Guarnizione	Gasket
45.20	Anello valvola	Ring
50.41.2	Pulsante completo	Trigger valve ass'y
51.24	Boccola regolatore	Regulator valve housing
51.25	Cilindro servovalvola	Valve cylinder
51.41	Boccola pulsante	Trigger valve housing
52.24	Tappo	Stopper
53.25	Pistone servovalvola	Valve piston
53.41	Pistone servovalvola	Valve piston
54.41.2	Pulsante	Trigger valve
55.41	Raccordo pulsante	Bush
57.24	Regolatore	Regulator
70.25	Protezione	Guard
71.21.1	Reggicaricatore	Support
72.21	Fermo carrello	Slider-Stop
75.28.1	Sicura	Safety
76.04	Perno	Pin
76.05	Perno	Pin
76.45	Perno molla	Pin
77.44.1	Guida sicura	Safety guide
80.08	Grilletto chiusura	Trigger
81.40	Grilletto comando	Trigger
90.07	Molla	Spring
91.73	Molla	Spring
91.74	Molla	Spring
92.01X	Molla	Spring
21.20.90	Battente	Driver
53.05.90	Caricatore	Magazine
63.25.90	Carrello	Slider
71.25.90	Spingipunto	Pusher
82.20.40	Controtestina	Nose
92.20.90	Testina	Nose plate
D01	Bocchetta olio	Oiler

Guarnizioni - O-Rings - Dichtungen - Joints toriques - Juntas - Δακτύλιος στεγανοποίησης - Vedantes - O-ringen - Contalnar - O-ringar - Těsnění - Tesnenia

