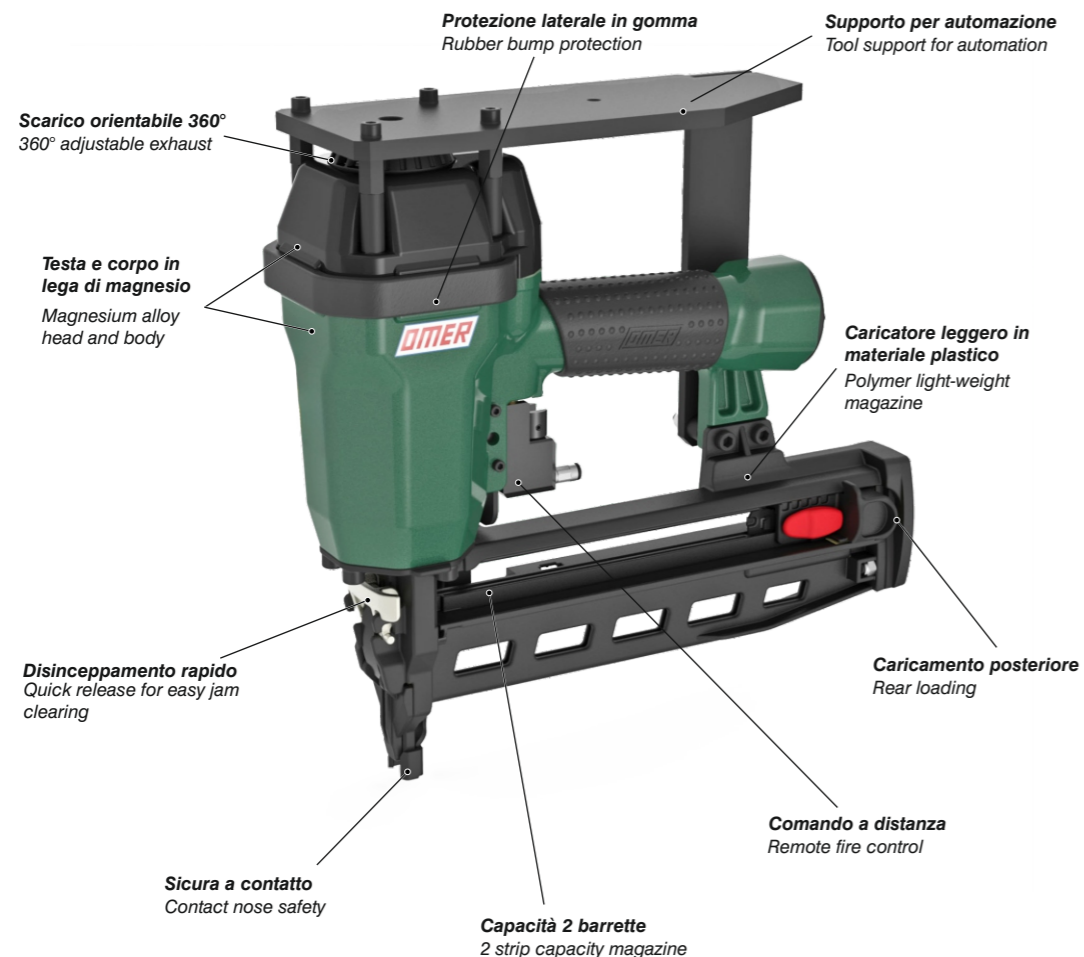


Tipo di punto - Type of fastener - Befestigungsmittel - Type de rivet - Tipo de punto - Τύπος αναλωσίμου
 Tipo de agrafa - Type nietjes - Zimba ve çivi tipleri - Typ av stygn - Typ sponky - Typ spony



Caratteristiche - Features - Merkmale - Caractéristiques - Características

Χαρακτηριστικά - Características - Kenmerken - Özellikler - Funktionen - Vlastnosti - Vlastnosti



Manuale d'uso, manutenzione e parti di ricambio	Parte 2
Manual for use, maintenance and spare parts	Part 2
Bedienungs- und Wartungshandbuch sowie Ersatzteilleiste	Teil 2
Mode d'emploi, de maintenance et pièces de rechange	Partie 2
Manual de uso, mantenimiento y recambios	Part 2
Εγχειρίδιο χρήσης, συντήρησης και ανταλλακτικών	Μέρος 2
Manual de uso, manutenção e peças sobresselentes	Parte 2
Handleiding voor gebruik, onderhoud en wisselstukken	Deel 2
Kullanım, bakım ve yedek parça kılavuzu	Kisim 2
Användar-, underhålls- och reservdelshandbok	Del 2
Návod k používání a údržbě a náhradní díly	Část 2
Návod na obsluhu, údržbu a náhradné diely	Časť 2



TN.64 CD1

cod. 1841800CD1

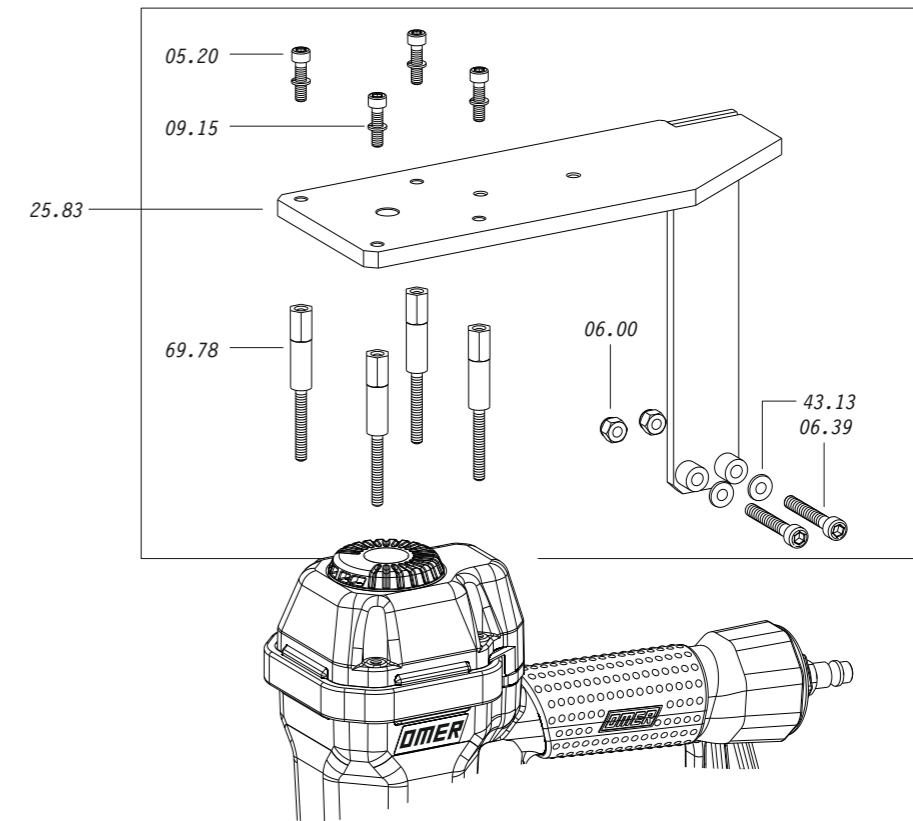
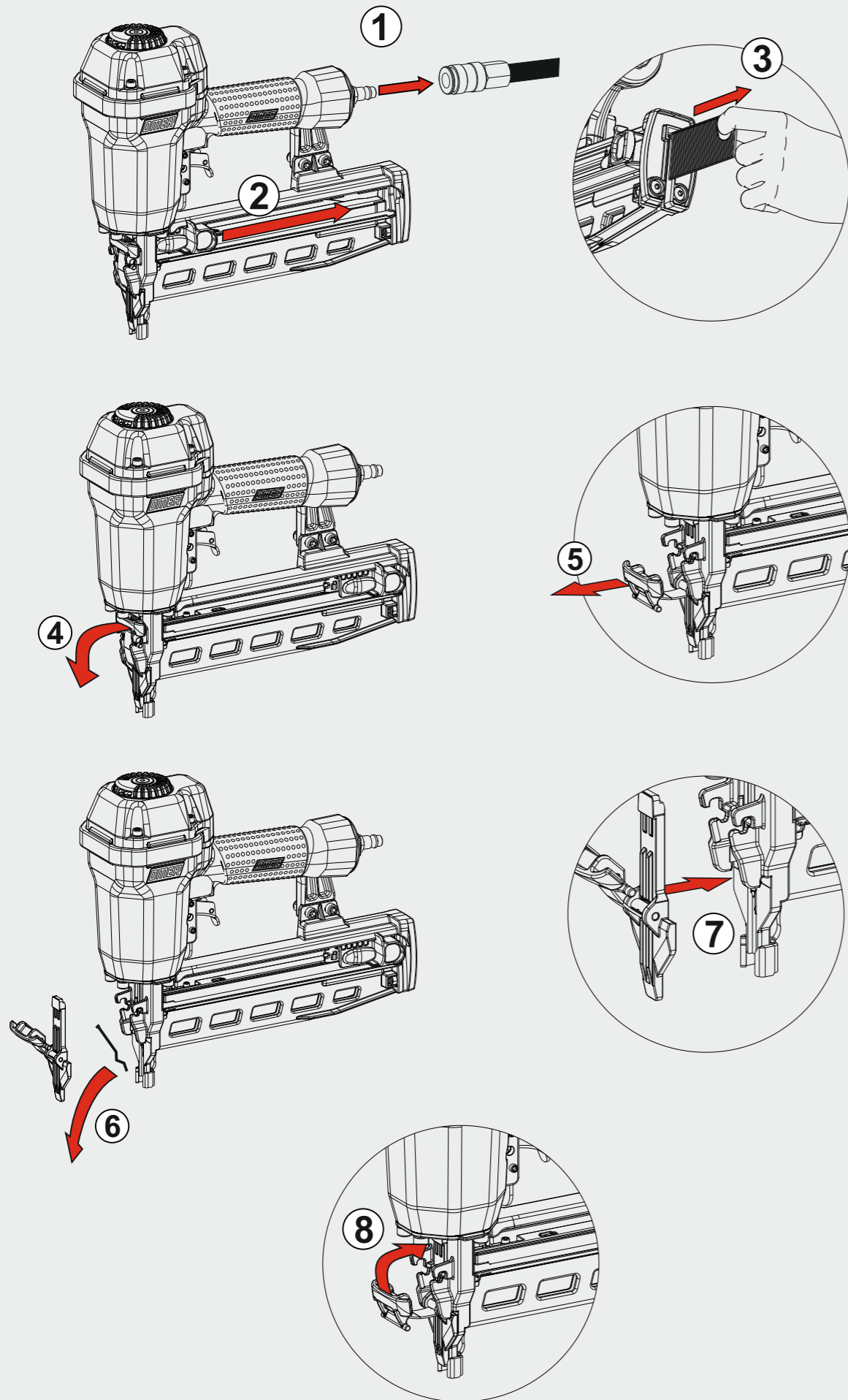


Dati tecnici Technical data Technische Daten Tehniska data	Caractéristiques techniques Datos técnicos Τεχνικά χαρακτηριστικά Technické údaje	Dados técnicos Technische gegevens Teknik veriler Technické údaje		
Misure impiegabili Lengths Verwendbare Nagellänge Dimensioner som kan användas	Dimensions utiles Medidas de longitud Μήκος Αναλωσίμου Prípustné rozměry	Medidas utilizáveis Toepasbare afmetingen Boy	mm inch	32+64 1-1/4"+2-1/2"
Capacità caricatore n° punti Magazine capacity Magazinkapazität Nägel Magasinkapacitet Antal punkter	Capacité chargeur n° de points Capacidad cargador n° puntos Δυνατότητα γεμιστερα Kapacita zásobníku p. sponek	Capacidade carregador n° pontos Capaciteit magazijn in aantal spijkers Dergi kapasitesi Kapacita zásobníka p. spôn		80
Pressione d'esercizio Operating pressure Betriebsdruck Drifttryck	Pression d'exercice Presión de servicio Πίεση λειτουργίας Pracovní tlak	Pressão de serviço Werkdruk Çalışma basıncı Prevádzkový tlak	bar psi	5+8,3 70+120
Consumo aria Air consumption Luftverbrauch Luftförbrukning	Consommation d'air Consumo aire Κατανάλωση αέρα Spotřeba vzduchu	Consumo ar Luchtverbruik Hava tüketimi Spotřeba vzduchu	lt/colpo ft³/cycle	1,40 0,04943
Peso Weight Gewicht Vikt	Poids Peso Βάρος Hmotnost	Peso Gewicht Ağırlık Hmotnost	kg lbs	3,88 8,55
Dimensioni Dimensions Abmessungen Dimensioner (AxBxH)	Dimensions Dimensiones Διαστάσεις Rozměry	Dimensões Afmetingen Boyutlar Rozměry	mm inch	323x101x310 12-29/32"x4"x12-7/32" (LxWxH)
EN 12549 :2009 EN ISO 3746 :2011 EN ISO 4871 :2009				
Potenza sonora emessa Sound power emitted Emitierte Schalleistung Avgiven ljudeffekt	Puissance sonore émise Potencia sonora emitida Εκτεμπόμενη ηχητική ισχύς Emitovaný akustický tlak	Potência sonora emitida Geëmitteerd geluidsvermogen Çıkan ses gücü (ses desibel) Výstupný akustický výkon	dB(A)	100 (K = 4 dB)

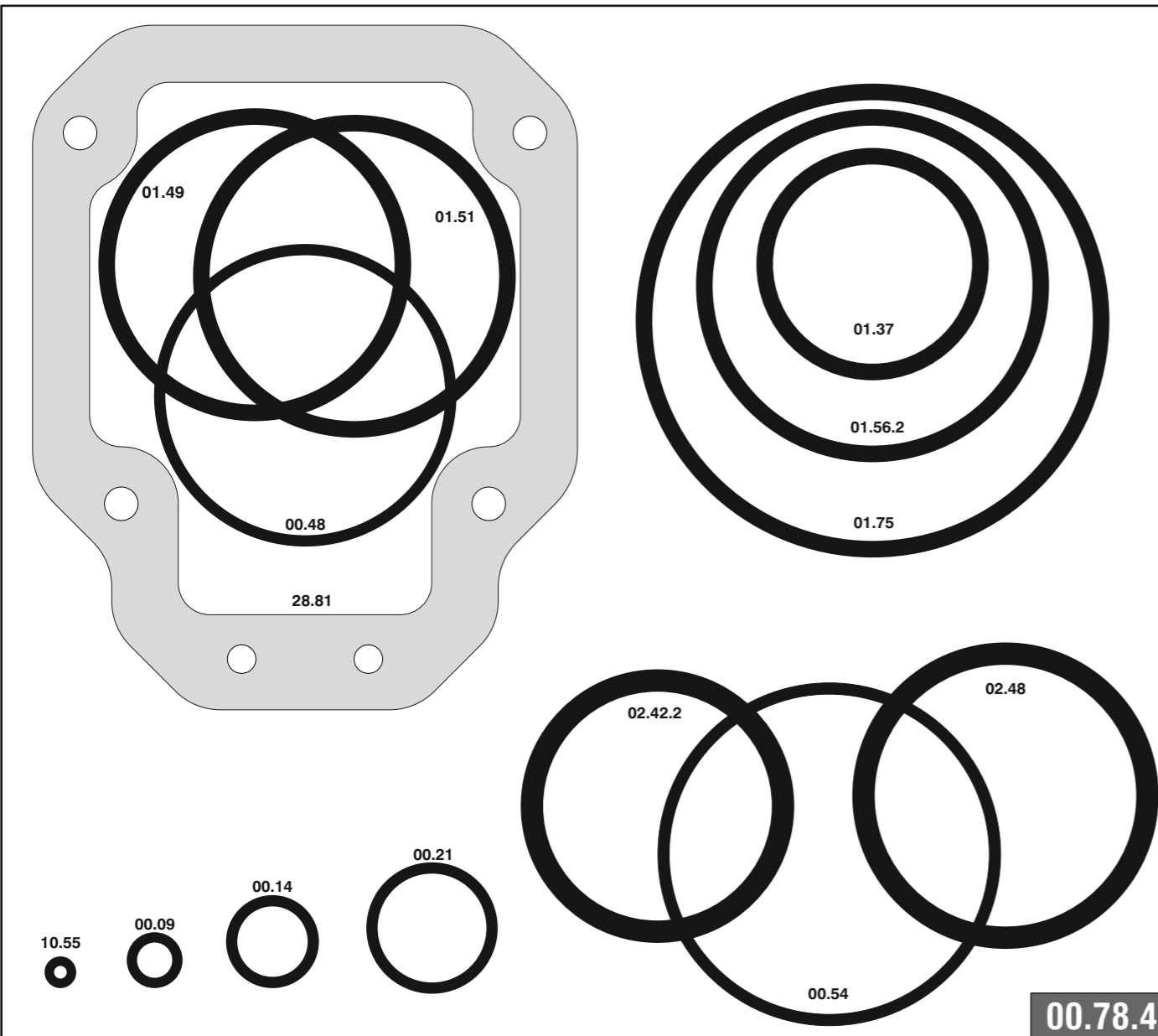
1841800CD1_TN64CD1_4_rev22_04/12/2024_MH

**DO NOT
HANDHELD
THIS TOOL**



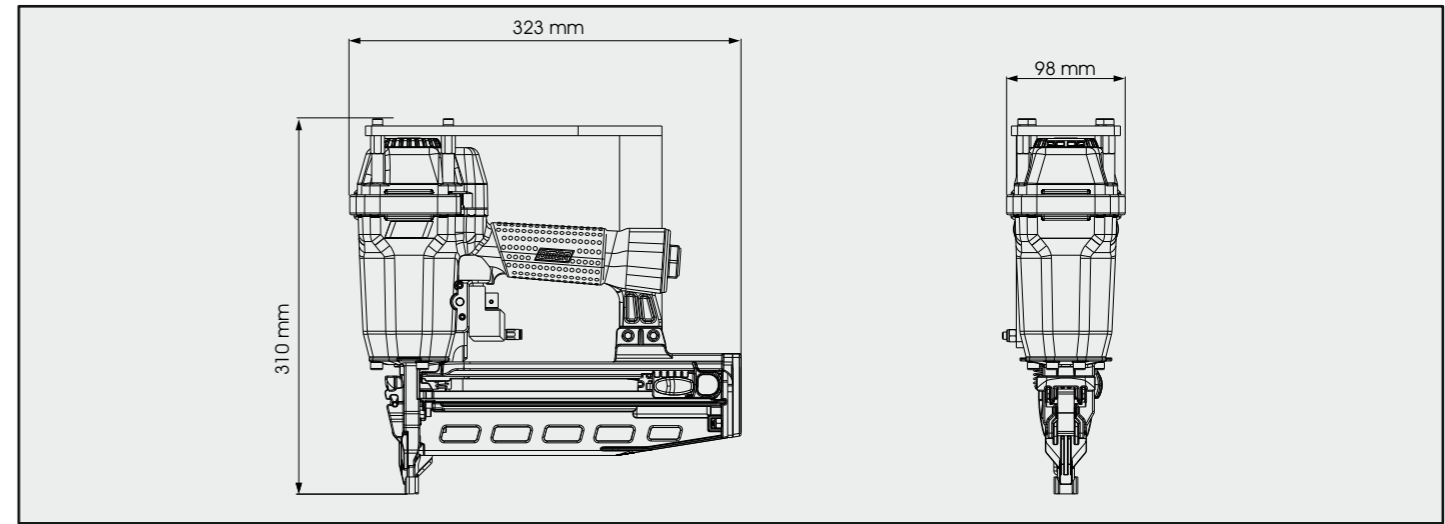
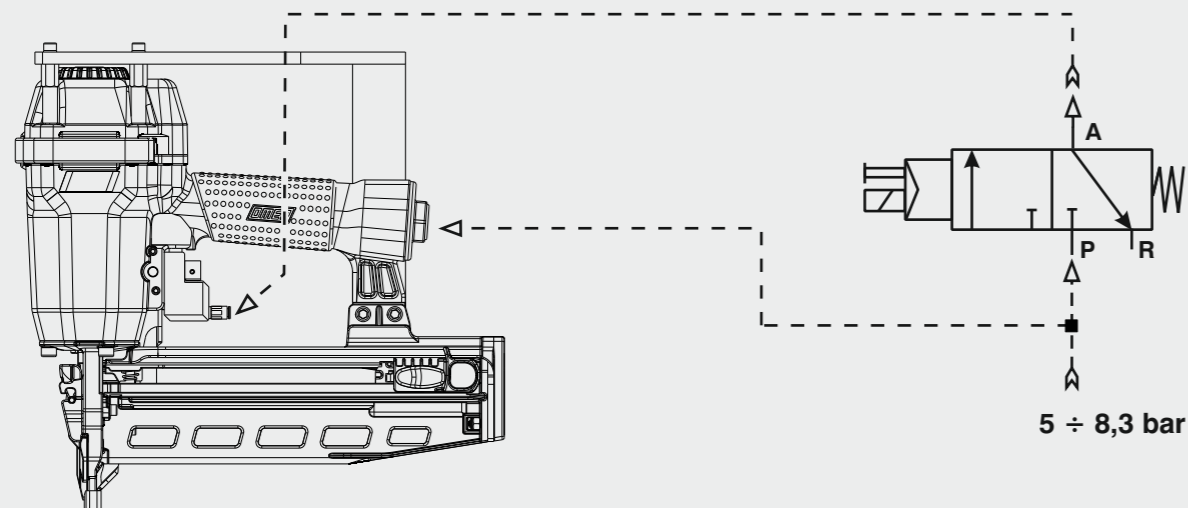


Cod.	Descrizione	Description	Cod.	Descrizione	Description
00.07	O-Ring	O-Ring	26.83	Cilindro	Cylinder
00.09	O-Ring	O-Ring	27.82	Anello cilindro	Cylinder ring
00.12	O-Ring	O-Ring	28.81	Guarnizione testa	Head gasket
00.14	O-Ring	O-Ring	30.82	Pistone	Piston
00.21	O-Ring	O-Ring	32.85	Ammortizzatore	Bumper
00.48	O-Ring	O-Ring	40.83	Valvola completa	Valve ass'y
00.54	O-Ring	O-Ring	43.13	Rondella	Washer
01.37	O-Ring	O-Ring	44.73	Guarnizione cilindro	Cylinder gasket
01.49	O-Ring	O-Ring	44.80	Ammortizzatore	Bumper
01.51	O-Ring	O-Ring	44.82	Distanziale	Spacer
01.56.2	O-Ring	O-Ring	50.83	Pulsante completo	Trigger valve ass'y
01.75	O-Ring	O-Ring	50.83.4	Comando a distanza	Remote fire valve
02.42.2	O-Ring	O-Ring	51.83	Boccola pulsante	Trigger valve housing
02.48	O-Ring	O-Ring	53.83	Pistone servovalvola	Valve piston
03.00	Dado	Nut	54.83	Pulsante	Trigger valve
03.31	Vite	Screw	55.83	Raccordo pulsante	Bush
04.08.2	Vite	Screw	59.81	Guida punti	Fastners guide
04.14	Vite	Screw	67.73	Distanziale	Spacer
05.00	Dado	Nut	69.78	Distanziale	Spacer
05.20	Vite	Screw	70.80	Protezione	Guard
05.20.1	Vite	Screw	71.83	Reggicaricatore	Support
06.00	Dado	Nut	75.83	Sicura	Safety
06.20	Vite	Screw	77.84	Guida sicura	Safety guide
06.39	Vite	Screw	79.71	Pomello	Pusher button
06.25.2	Vite	Screw	79.73	Guida spingipunto	Pusher guide
07.25	Chiave esagonale	Hex. bar wrench	80.75	Grilletto testina	Nose plate lock
07.30	Chiave esagonale	Hex. bar wrench	81.84	Pistoncino	Piston
07.40	Chiave esagonale	Hex. bar wrench	86.80	Boccola	Bush
07.50	Chiave esagonale	Hex. bar wrench	90.75	Molla	Spring
09.15	Rondella	Washer	91.73	Molla	Spring
09.16	Rondella	Washer	91.84	Molla	Spring
09.21	Anello elastico	Elastic ring	92.73	Molla	Spring
10.55	O-Ring	O-Ring	93.81	Molla	Spring
14.20.1	Spina	Pin	21.80.33	Battente	Driver
14.25.1	Spina	Pin	31.80.33	Guida battente	Driver Guide
17.27	Tappo	Inlet cap	50.70.33	Caricatore	Magazine
17.30.5	Attacco	Connection	73.71.33	Spingipunto	Pusher
21.83	Corpo	Body	81.80.33	Controtestina	Nose
22.82	Testa	Head	91.80.33	Testina	Nose plate
25.81	Deflettore	Deflector	D01	Bocchetta olio	Oiler
25.83	Supporto	Support	D02	Occhiali protettivi	Protective goggles



Schema di collegamento - Connecting diagram

Collegamento per valvola 3/2 NC
 Connection for valve 3/2 NC



Caricamento - Loading - Laden - Chargement - Carga - Γέμισμα - Carregamento - Laden - Yükleme - Laddning - Plnění - Plnění

Caricamento posteriore
 Rear load magazine

