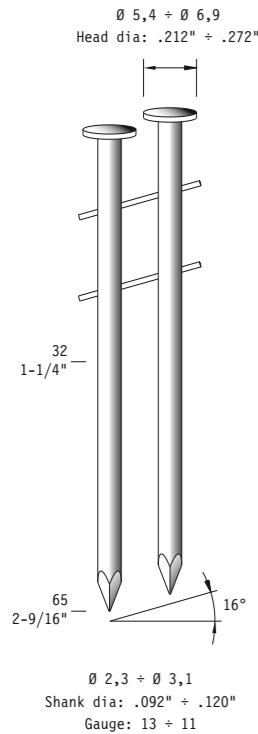


Tipo di punto - Type of fastener - Befestigungsmittel - Type de rivet - Tipo de punto - Τύπος αναλωσίμο
 υTipo de agrafa - Type nietjes - Zimba ve çivi tipleri - Typ av stygn - Typ sponky - Tip spony

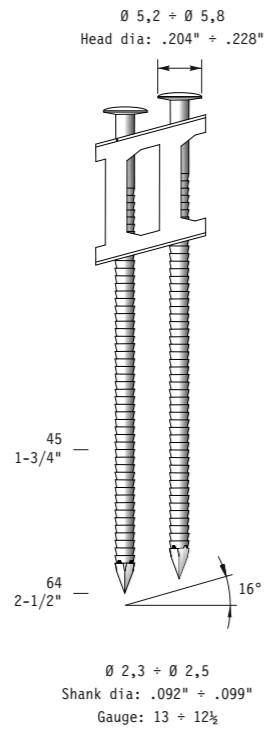
CNW23
CNW25
CNW28
CNW31



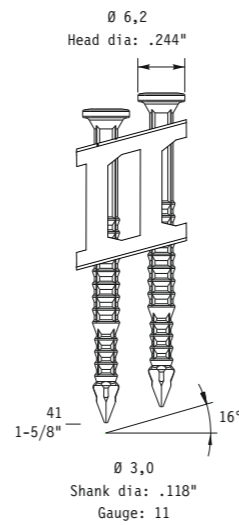
CNP23



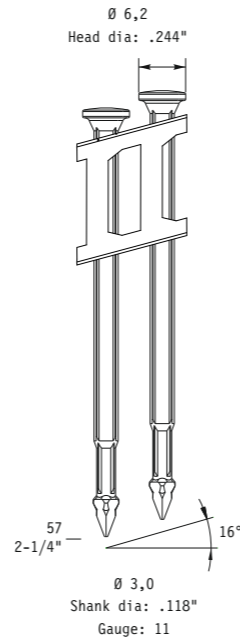
CNP25



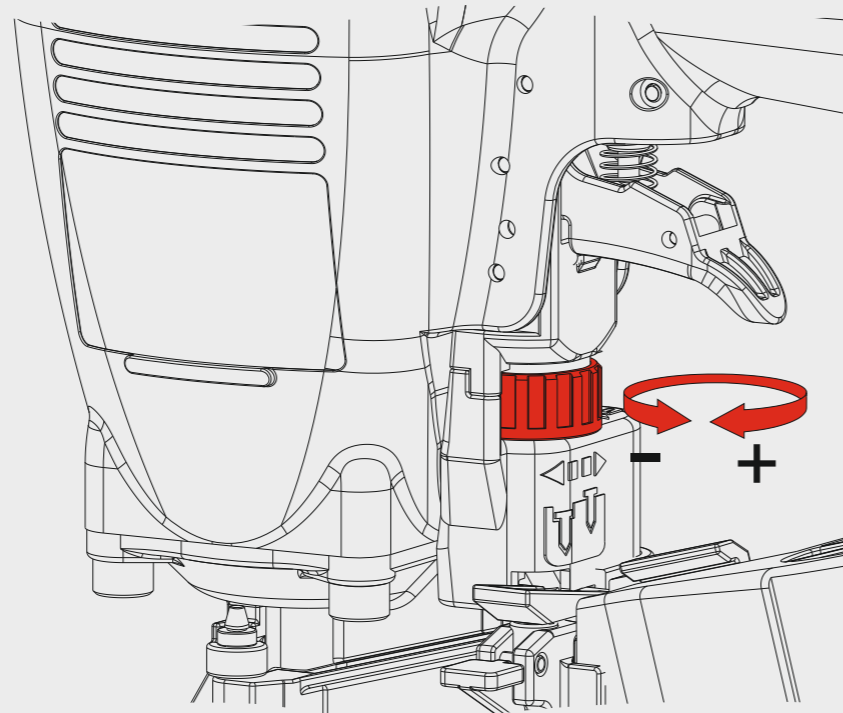
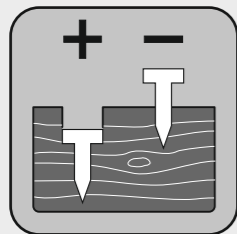
5D



8D



Regolazione di profondità - Depth adjustment - Tiefeneinstellung - Réglage des dimensions - Réglage des dimensions
 Ρύθμιση βάθους - Regulação de profundidade - Diepte afstelling - Derinlik ayarı - Djupjustering - Nastavení hloubky - Nastavenie hĺbky



Manuale d'uso, manutenzione e parti di ricambio
 Manual for use, maintenance and spare parts
 Bedienungs- und Wartungshandbuch sowie Ersatzteilliste
 Mode d'emploi, de maintenance et pièces de rechange
 Manual de uso, mantenimiento y recambios
 Εγχειρίδιο χρήσης, συντήρησης και ανταλλακτικών
 Manual de uso, manutenção e peças sobresselentes
 Handleiding voor gebruik, onderhoud en wisselstukken
 Kullanım, bakım ve yedek parça kılavuzu
 Användar-, underhålls- och reservdelshandbok
 Návod k používání a údržbě a náhradní díly
 Návod na obsluhu, údržbu a náhradné diely

Parte 2
Part 2
Teil 2
Partie 2
Part 2
Μέρος 2
Parte 2
Deel 2
Kisim 2
Del 2
Část 2
Čast 2



CN31.65

cod. 195MCN3165



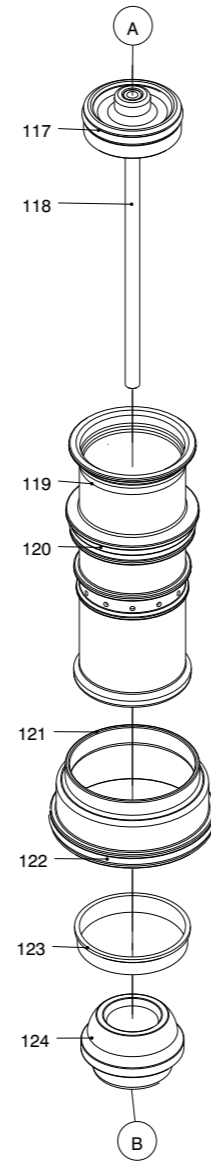
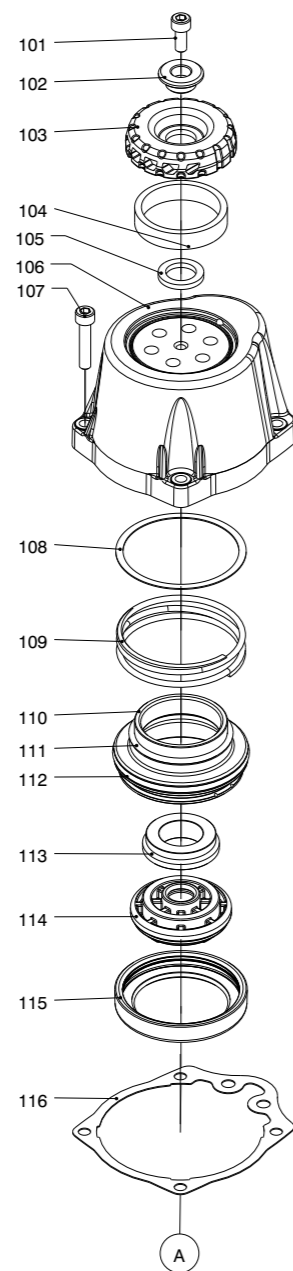
Warning: Please read the instructions and warnings for this tool carefully before use. Failure to do so could lead to serious injury.

Dati tecnici Technical data Technische Daten Tekniska data	Caractéristiques techniques Datos técnicos Τεχνικά χαρακτηριστικά Technické údaje	Dados técnicos Technische gegevens Teknik veriler Technické údaje		
Misure impiegabili Lengths Verwendbare Nagellänge Dimensioner som kan användas	Dimensions utiles Medidas de longitud Μήκος Αναλωσίμου Příпустné rozměry	Medidas utilizáveis Toepasbare afmetingen Boy Použitelné rozmery	mm inch	32 + 65 1-1/4" + 2-9/16"
Capacità caricatore n° punti Magazine capacity Magazinkapazität: Nägel Magasinkapacitet: Antal punkter	Capacité chargeur n° de points Capacidad cargador n° puntos Δυνατότητα γεμιστέρα Kapacita zásobníku p. sponek	Capacidade carregador n° pontos Capaciteit magazijn in aantal spijkers Dergi kapasitesi Kapacita zásobníka p. spôn		175 + 300
Pressione d'esercizio Operating pressure Betriebsdruck Drifttryck	Pression d'exercice Presión de servicio Πίεση λειτουργίας Pracovní tlak	Pressão de serviço Werkdruk Çalışma basıncı Prevádzkový tlak	bar psi	5 + 8 70 + 115
Consumo aria Air consumption Luftverbrauch Luftförbrukning	Consommation d'air Consumo aire Κατανάλωση αέρα Spotřeba vzduchu	Consumo ar Luchtverbruik Hava tüketimi Spotřeba vzduchu	lt/colpo ft ³ /cycle	2,46 0,0869
Peso Weight Gewicht Vikt	Poids Peso Βάρος Hmotnost	Peso Gewicht Ağırlık Hmotnost	kg lbs	2,10 4,62
Dimensioni Dimensions Abmessungen Dimensioner (AxBxH)	Dimensions Dimensiones Διαστάσεις Rozměry	Dimensões Afmetingen Boyutlar Rozmery	mm inch	298x128x306 11-3/4"x5-1/32"x12-1/16" (LxWxH)
EN 12549 :2009 EN ISO 4871 :2009 Pressione sonora in pos. operatore Sound pressure in operator's position Schalldruck am Arbeitsplatz Ljudtryck på operatörsplatsen	Pression sonore poste Opérateur Presión sonora en la pos. del operador Ηχητική πίεση στη Θέση του Χειριστή Akustický tlak v místě obsluhy	Pressão sonora na posição Operador Geluidsdruk op de werkplaats Οπερατόρ ποζιسیونουδα ses basıncı Akustický tlak v mieste obsluhy	dB(A)	88,3 (K = 4 dB)
EN 12549 :2009 EN ISO 3746 :2011 EN ISO 4871 :2009 Potenza sonora emessa Sound power emitted Emitierte Schalleistung Avgiven ljudeffekt	Puissance sonore émise Potencia sonora emitida Εκπεμπόμενη ηχητική ισχύς Emitovaný akustický tlak	Potência sonora emitida Geëmitteerd geluidsvermogen Çıkan ses gücü (ses desibel) Výstupný akustický výkon	dB(A)	100,6 (K = 4 dB)
CEN ISO/TS 8662-11 :2006 EN ISO 5349-2 :2004 EN 12096 :1999 Emissione vibratoria sull'impugnatura Vibratory emissions on handle Vibrationsemission am Griff Vibrationsemission på handtaget	Émission vibratoire sur la prise en main Emisión de vibraciones en la empuñadura Εκπεμπόμενες δονήσεις στη λαβή Emise vibrací na rukojet	Emissão vibratória na empunhadura Trillingsemissie op de handgreep Tutamak üzerinde vibrasyon emisyonları Emisie vibrácií na rukováti	m/s ²	4,37 (K = 2 m/s ²)

195MCN3165_CN3165_B1_rev22_11/12/2024_MH

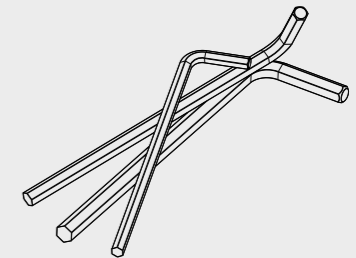
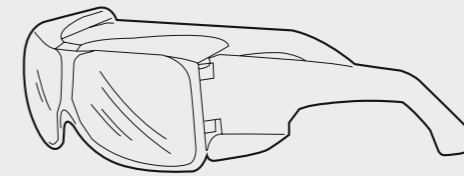
Ref. No. Part No. Description

101	2MCN3165-A101	Hex. Soc. Hd. Bolt
102	2MCN3165-A102	Washer
103	2MCN3165-A103	Deflector
104	2MCN3165-A104	Muffler
105	2MCN3165-A105	Rubber Pad
106	2MCN3165-A106	Cap
107	2MCN3165-A107	Hex. Soc. Hd. Bolt
108	2MCN3165-A108	Washer
109	2MCN3165-A109	Compression Spring
110	2MCN3165-A110	Hd.Valve Piston
111	2MCN3165-A111	O-Ring
112	2MCN3165-A112	O-Ring
113	2MCN3165-A113	Seal Gasket
114	2MCN3165-A114	Seal
115	2MCN3165-A115	Collar
116	2MCN3165-A116	Packing
117	2MCN3165-A117	O-Ring
118	2MCN3165-A118	Driver Unit
119	2MCN3165-A119	Cylinder
120	2MCN3165-A120	O-Ring
121	2MCN3165-A121	Cylinder Spacer
122	2MCN3165-A122	O-Ring
123	2MCN3165-A123	Cylinder Ring
124	2MCN3165-A124	Bumper
200	2MCN3165-A200	Trigger Valve Unit
201	2MCN3165-A201	O-Ring
202	2MCN3165-A202	O-Ring
203	2MCN3165-A203	Plunger Cap
204	2MCN3165-A204	Valve Plunger
205	2MCN3165-A205	O-Ring
206	2MCN3165-A206	O-Ring
207	2MCN3165-A207	Spring
208	2MCN2550-A208	Plunger
209	2MCN3165-A209	O-Ring
210	2MCN3165-A210	Trigger Valve Head
211	2MCN3165-A211	Spring Pin
212	2MCN3165-A212	Spring Pin
213	2MCN3165-A213	Spring Pin
221	2MCN2550-A215	Trigger Unit
222	2MCN2550-A214	Spring
301	2MCN3165-A301	Gun Body Unit
302	2MCN2865-A302	End Cap
303	2MCN3165-A303	O-Ring
304	2MCN3165-A304	Dusty Cover
305	2MCN3165-A305	Air Plug
306	2MCN3165-A306	Protective Cushion
401	2MCN3165-A401	Nose Piece
402	2MCN3165-A402	O-Ring
403	2MCN3165-A403	Feed Piston
404	2MCN3165-A404	O-Ring
405	2MCN3165-A405	O-Ring
407	2MCN3165-A407	Spring A Compression
408	2MCN3165-A408	Feed Bumper
409	2MCN3165-A409	Feed Piston Cap
410	2MCN3165-A410	C-Ring
411	2MCN3165-A411	Feed Finger
412	2MCN3165-A412	Feed Finger Spring
414	2MCN3165-A414	Pu Retainer
415	2MCN3165-A415	First Stopper Finger
416	2MCN3165-A416	Urethane Retainer
417	2MCN3165-A417	Spring
418	2MCN3165-A418	Pin Feed Piston
419	2MCN3165-A419	Pin-Nail Stop
420	2MCN3165-A420	Door Shaft Pin
421	2MCN3165-A421	Door
422	2MCN3165-A422	Latch Spring
423	2MCN3165-A423	Door Latch
424	2MCN3165-A424	Spring Pin
425	2MCN3165-A425	Nail Stop
426	2MCN3165-A426	Stopper Finger Sprin
427	2MCN3165-A427	Pin-Nail Stop
428	2MCN3165-A428	Hex. Soc. Hd. Bolt
429	2MCN3165-A429	Hex. Soc. Hd. Bolt
430	2MCN3165-A430	Safety Cover
431	2MCN3165-A431	Bolt Cap
432	2MCN3165-A432	Safety Guide
433	2MCN3165-A433	Spring Pin
434	2MCN3165-A434	Safety Spring
435	2MM365-A416	Safety B Unit
436	2MCN3165-A436	Adjust Axie
437	2MCN3165-A437	Cover-Safety
438	2MCN3165-A438	Adjust Rod
439	2MCN3165-A439	O-Ring
440	2MCN3165-A440	Safety A Unit



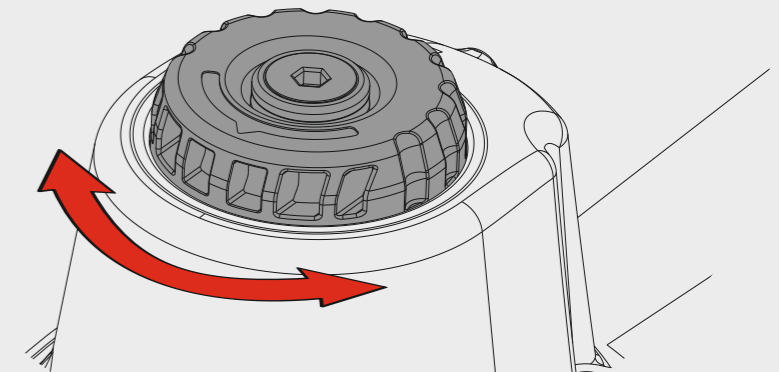
441	2MCN3165-A441	E-Ring
442	2MCN3165-A442	Protective Casing
443	2MCN3165-A443	Magazine Cover
444	2MCN3165-A444	Spring Base A
445	2MCN3165-A445	Pull Spring
446	2MCN3165-A446	Spacer
447	2MCN3165-A447	Magazine Case
448	2MCN3165-A448	Spring Base
449	2MCN3165-A449	Door Shaft Pin
450	2MCN3165-A450	Shaft Ring
451	2MCN3165-A451	Hex. Soc. Hd. Bolt
452	2MCN3165-A452	Flat Washer
454	2MCN3165-A454	Lock Nut
455	2MCN3165-A455	Muzzle Protector
456	2MCN3165-A456	Fixed Pin
457	2MCN2550-A456	Fixed Ring
458	2MCN3165-A458	O-Ring
459	2MCN3165-A459	Fix-Plate
460	2MCN3165-A460	O-Ring

Dotazioni - Equipment - Ausstattung - Outillage - Dotaciones - Εξοπλισμός
Dotacões - Litrusting - Donanmalar - Litrusting - Vahavenä - Vähäva



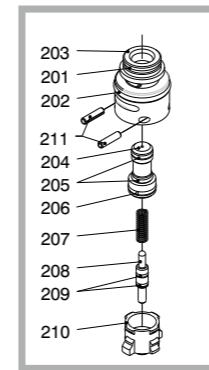
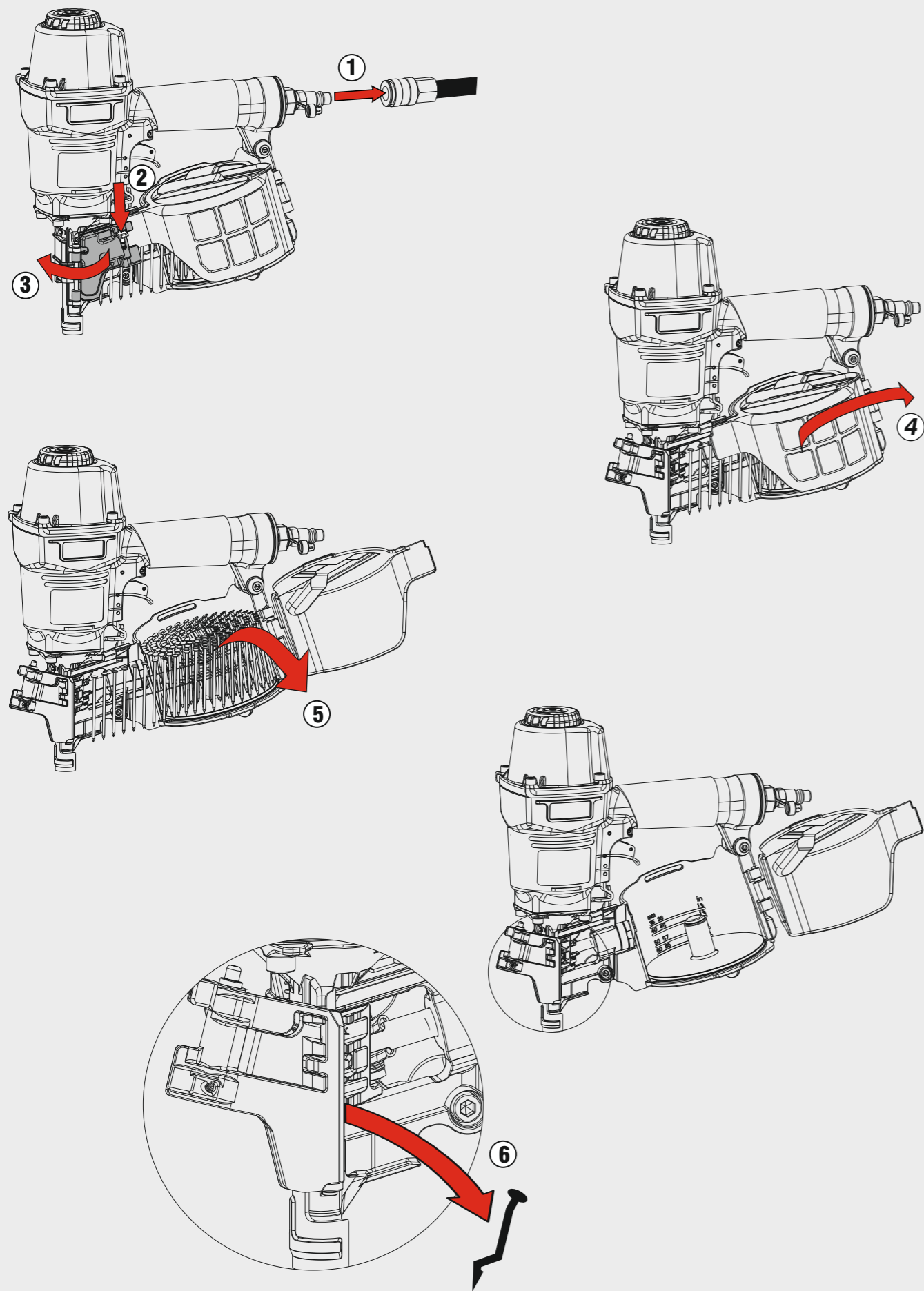
Caratteristiche - Features - Merkmale - Caractéristiques - Características
Χαρακτηριστικά - Características - Kenmerken - Özellikler - Funktioner - Vlastnosti - Vlastnosti

Scarico orientabile a 360°
360° adjustable exhaust

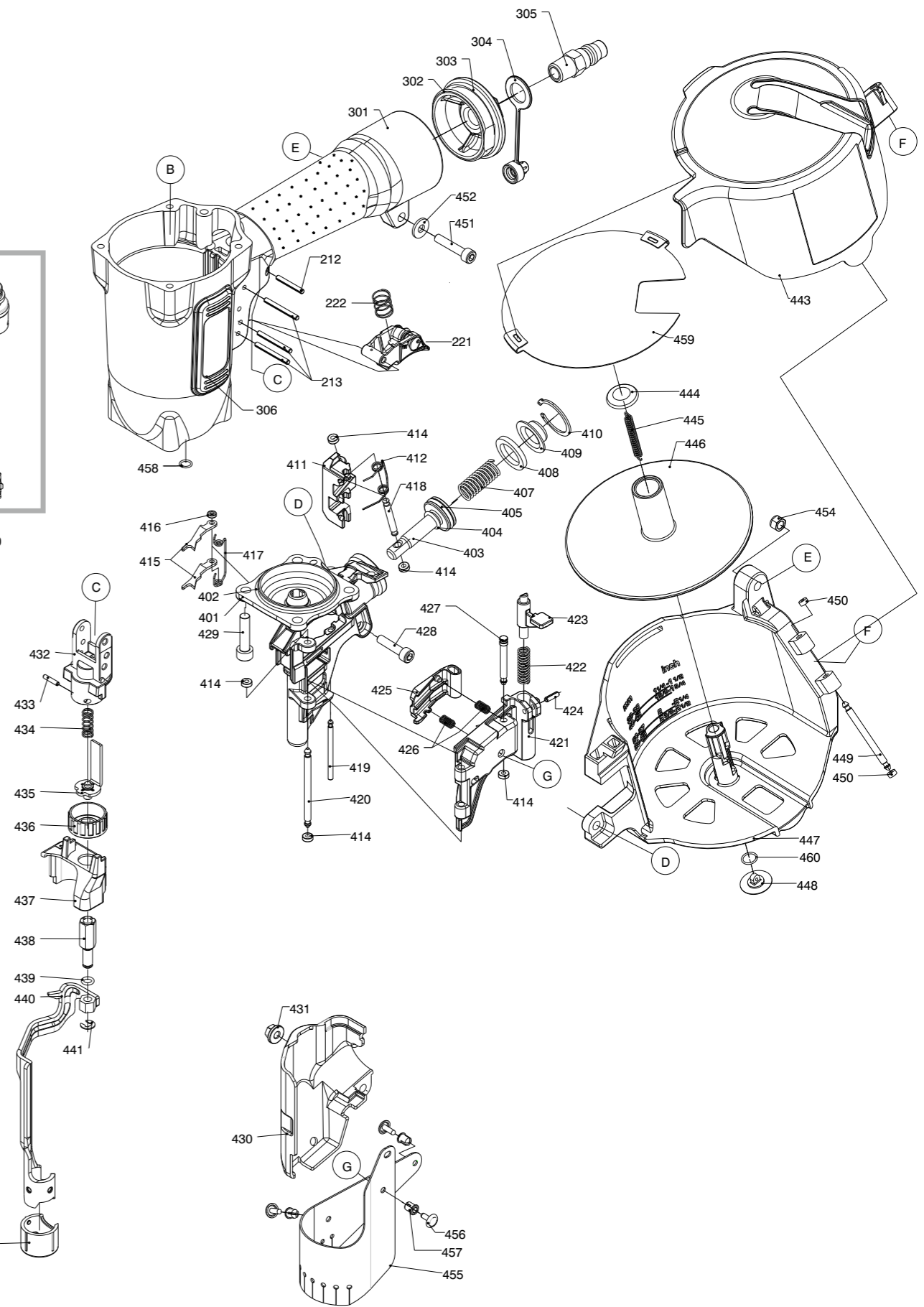


Notes

Parti di ricambio - Spare parts - Ersatzteile - Pièces de rechange - Recambios - Ανταλλακτικά
Partes sobresselentes - Wisselstukken - Yedek parçalar - Reservdelar - Náhradní díly - Náhradné diely



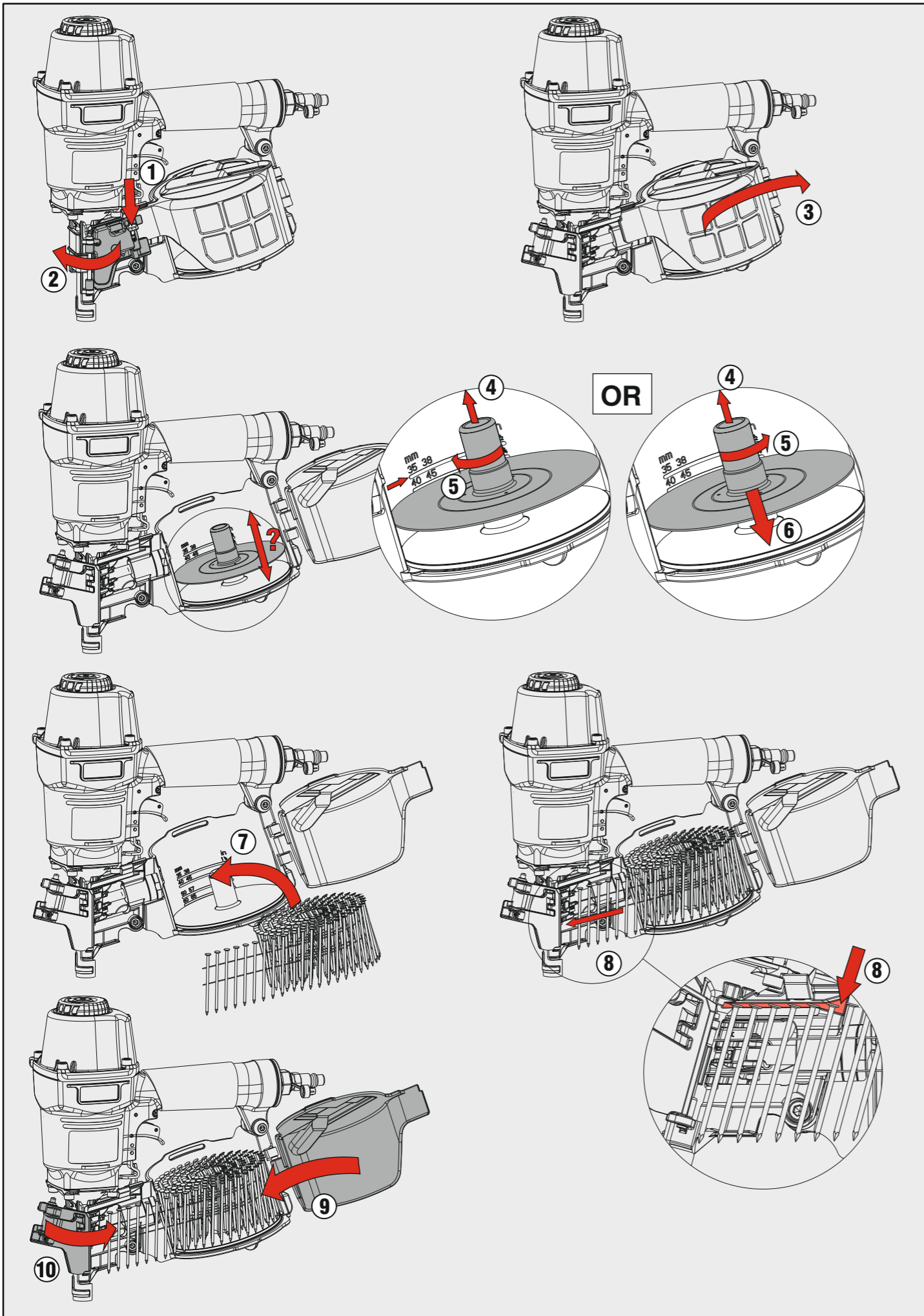
200



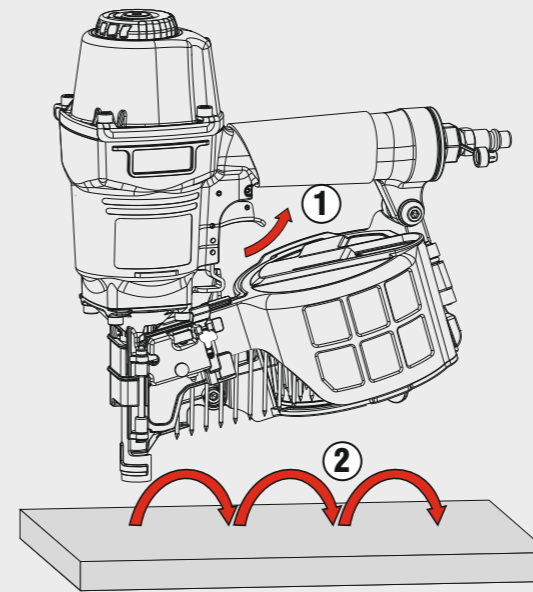
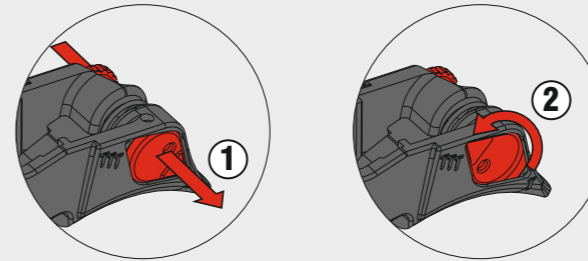
CN31.65

cod. 195MCN3165

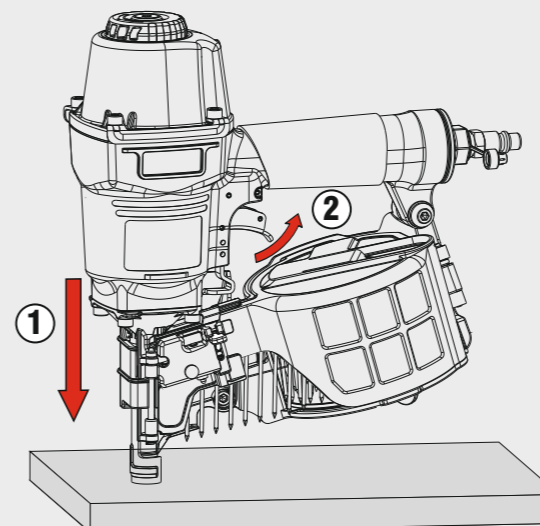
Indice di modifica **B1**
 Upgrade number



Azionamento a contatto
 Contact actuation



Oppure - Or



Azionamento sequenziale singolo
 Single sequential actuation

