

**90.438 FL2**

USE GENUINE OMER FASTENERS  
**STAPLES 90 (18GA)**

25 - 3.5 - 1"  
38 - 1-1/2"

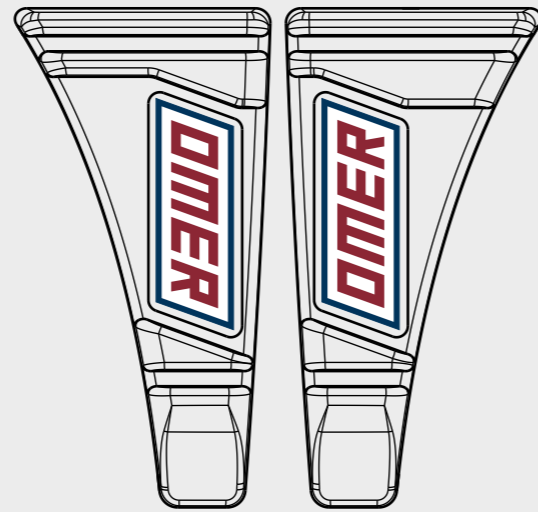
Crown: .217"  $\square$  1.00x1.25  
 $P_{s\ max}$ : 7,5 bar (105 PSI)

3ET90438FL2

**omer** s.p.a. CE UK CA  
Via Foresto, 42 - 31058 SUSEGANA (TV) ITALY

3ETCE

**WARNING**  
1. Read and understand tool labels and manual.  
2. Failure to follow warnings could result in DEATH or SERIOUS INJURY.  
3. Operators and others in the work area MUST wear safety glasses with side shields.  
4. Keep fingers AWAY from the trigger when not driving fasteners to avoid accidental firing.  
5. Choice of trigger systems is important. Check manual for triggering options.  
6. NEVER point tool at your self or others in work area.  
7. NEVER use oxygen or other bottled gasses. Explosion may occur.



3ET99

3ETS1

2007042L

2007042R

Caratteristiche - Features - Merkmale - Caractéristiques - Características - Χαρακτηριστικά  
Características - Kenmerken - Özellikler - Funktionen - Vlastnosti - Vlastnosti



**Manuale d'uso, manutenzione e parti di ricambio**  
**Manual for use, maintenance and spare parts**  
**Bedienungs- und Wartungshandbuch sowie Ersatzteilliste**  
**Mode d'emploi, de maintenance et pièces de rechange**  
**Manual de uso, mantenimiento y recambios**  
**Εγχειρίδιο χρήσης, συντήρησης και ανταλλακτικών**  
**Manual de uso, manutenção e peças sobresselentes**  
**Handleiding voor gebruik, onderhoud en wisselstukken**  
**Kullanım, bakım ve yedek parça kılavuzu**  
**Användar-, underhålls- och reservdelshandbok**  
**Návod k používání a údržbě a náhradní díly**  
**Návod na obsluhu, údržbu a náhradné diely**

**Parte 2**  
**Part 2**  
**Teil 2**  
**Partie 2**  
**Part 2**  
**Μέρος 2**  
**Parte 2**  
**Deel 2**  
**Kisim 2**  
**Del 2**  
**Část 2**  
**Čast 2**



**90.438 FL2**

cod. 1447050FL2



**Warning: Please read the instructions and warnings for this tool carefully before use. Failure to do so could lead to serious injury.**

**Dati tecnici**

Technical data  
Technische Daten  
Tehniska data

**Caractéristiques techniques**

Datos técnicos  
Τεχνικά χαρακτηριστικά  
Technické údaje

**Dados técnicos**

Technische gegevens  
Teknik veriler  
Technické údaje

**Misure impiegabili**

Lengths  
Verwendbare Nagellänge  
Dimensioner som kan användas

Dimensions utiles  
Medidas de longitud  
Μήκος Αναλώσιμου  
Příпустné rozměry

Medidas utilizáveis  
Toepasbare afmetingen  
Boy  
Použitelné rozmery

**mm** **25÷38**  
**inch** **1"÷1-1/2"**

**Capacità caricatore n° punti**

Magazine capacity  
Magazinkapazität Nägel  
Magasinkapacitet Antal punkter

Capacité chargeur n° de points  
Capacidad cargador n° puntos  
Δυνατότητα γεμιστέρα  
Kapacita zásobníku p. sponek

Capacidade carregador n° pontos  
Capaciteit magazijn in aantal spijkers  
Dergi kapasitesi  
Kapacita zásobníka p. spôn

**190**

**Pressione d'esercizio**

Operating pressure  
Betriebsdruck  
Drifttryck

Pression d'exercice  
Presión de servicio  
Πίεση λειτουργίας  
Pracovní tlak

Pressão de serviço  
Werkdruk  
Çalışma basıncı  
Prevádzkový tlak

**bar** **5÷7,5**  
**psi** **70÷105**

**Consumo aria**

Air consumption  
Luftverbrauch  
Luftförbrukning

Consumation d'air  
Consumo aire  
Κατανάλωση αέρα  
Spotřeba vzduchu

Consumo ar  
Luchtverbruik  
Hava tüketimi  
Spotřeba vzduchu

**lt/colpo** **0,50**  
**ft<sup>3</sup>/cycle** **0,0176**

**Peso**

Weight  
Gewicht  
Vikt

Poids  
Peso  
Βάρος  
Hmotnost

Peso  
Gewicht  
Ağırlık  
Hmotnost

**kg** **2,06**  
**lbs** **4,54**

**Dimensioni**

Dimensions  
Abmessungen  
Dimensioner (AxBxH)

Dimensions  
Dimensiones  
Διαστάσεις  
Rozměry

Dimensões  
Afmetingen  
Boyutlar  
Rozmery

**mm** **376x76x256**  
**inch** **14-13/16"x3"x10-3/32"**  
(LxWxH)

**EN 12549 :2009 EN ISO 4871 :2009**

**Pressione sonora in pos. operatore**  
Sound pressure in operator's position  
Schalldruck am Arbeitsplatz  
Ljudtryck på operatörsplatsen

Pression sonore poste Opérateur  
Presión sonora en la pos. del operador  
Ηχητική πίεση στη θέση του χειριστή  
Akustický tlak v místě obsluhy

Pressão sonora na posição Operador  
Geluidsdruk op de werkplaats  
Operatör pozisyonunda ses basıncı  
Akustický tlak v mieste obsluhy

**dB(A)** **86**  
(K= 4 dB)

**EN 12549 :2009 EN ISO 3746 :2011 EN ISO 4871 :2009**

**Potenza sonora emessa**  
Sound power emitted  
Emitierte Schalleistung  
Avgiven ljudeffekt

Puissance sonore émise  
Potencia sonora emitida  
Εκπεμπόμενη ηχητική ισχύς  
Emitovaný akustický tlak

Potência sonora emitida  
Geëmitteerd geluidsvermogen  
Çıkan ses gücü (ses desibeli)  
Výstupný akustický výkon

**dB(A)** **94**  
(K= 4 dB)

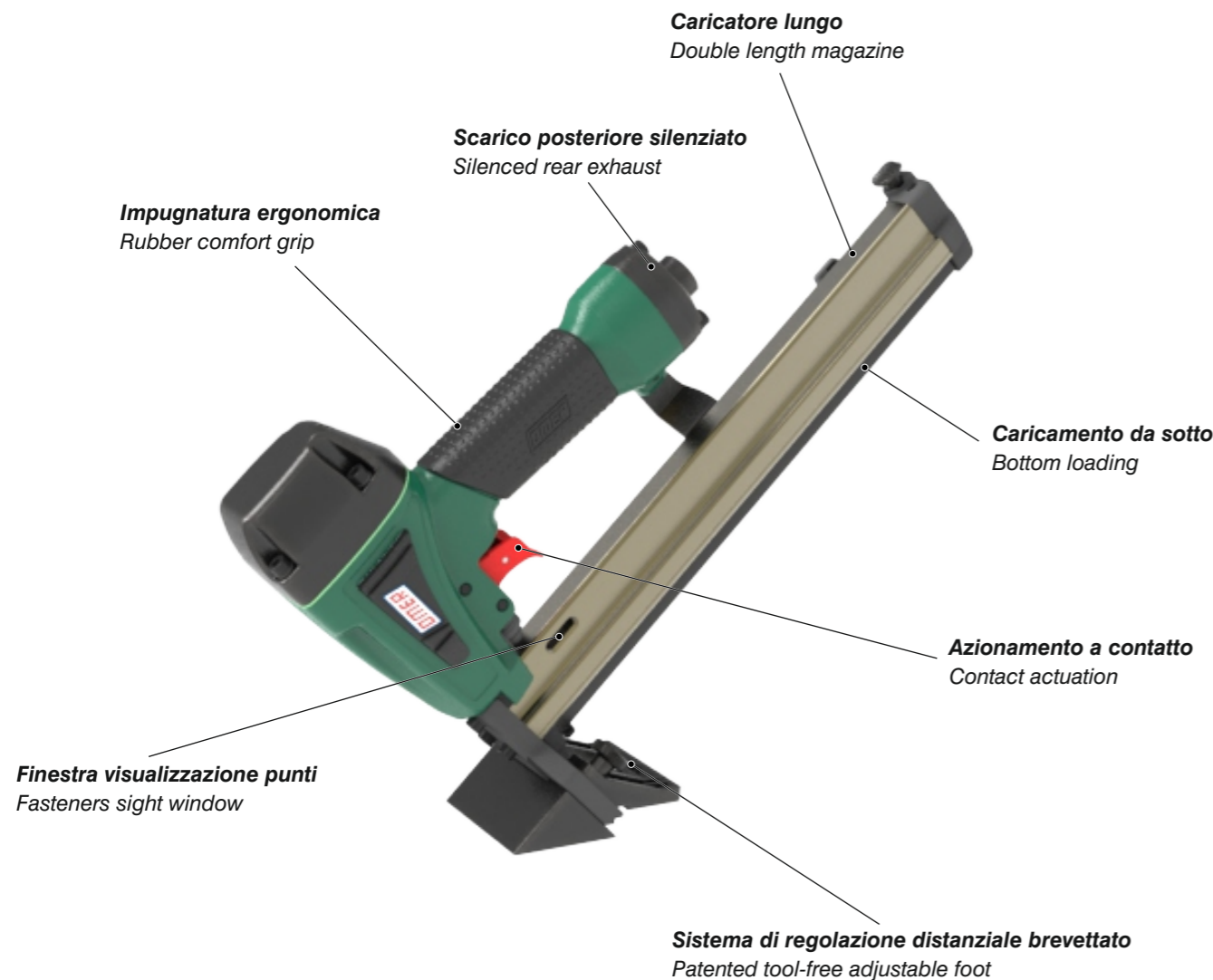
**CEN ISO/TS 8662-11 :2006 EN ISO 5349-2 :2004 EN 12096 :1999**

**Emissione vibratoria sull'impugnatura**  
Vibratory emissions on handle  
Vibrationsemission am Griff  
Vibrationsemission på handtaget

Émission vibratoire sur la prise en main  
Emisión de vibraciones en la empuñadura  
Εκπεμπόμενες δονήσεις στη λαβή  
Emise vibrací na rukojet

Emissão vibratória na empunhadura  
Trillingsemissie op de handgreep  
Tutamak üzerinde vibrasyon emisyonları  
Emisie vibrácií na rukováti

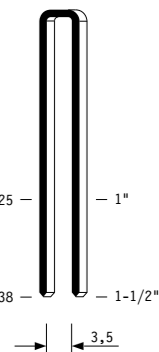
**m/s<sup>2</sup>** **3,10**  
(K= 2 m/s<sup>2</sup>)



**Tipo di punto**  
Type of fastener  
Befestigungsmittel  
Type de rivet  
Tipo de punto  
Τύπος αναλώσιμου  
Tipo de agrafó  
Type nietjes  
Zimba ve çivi tipleri  
Typ av stýgn  
Typ sponky  
Typ spony

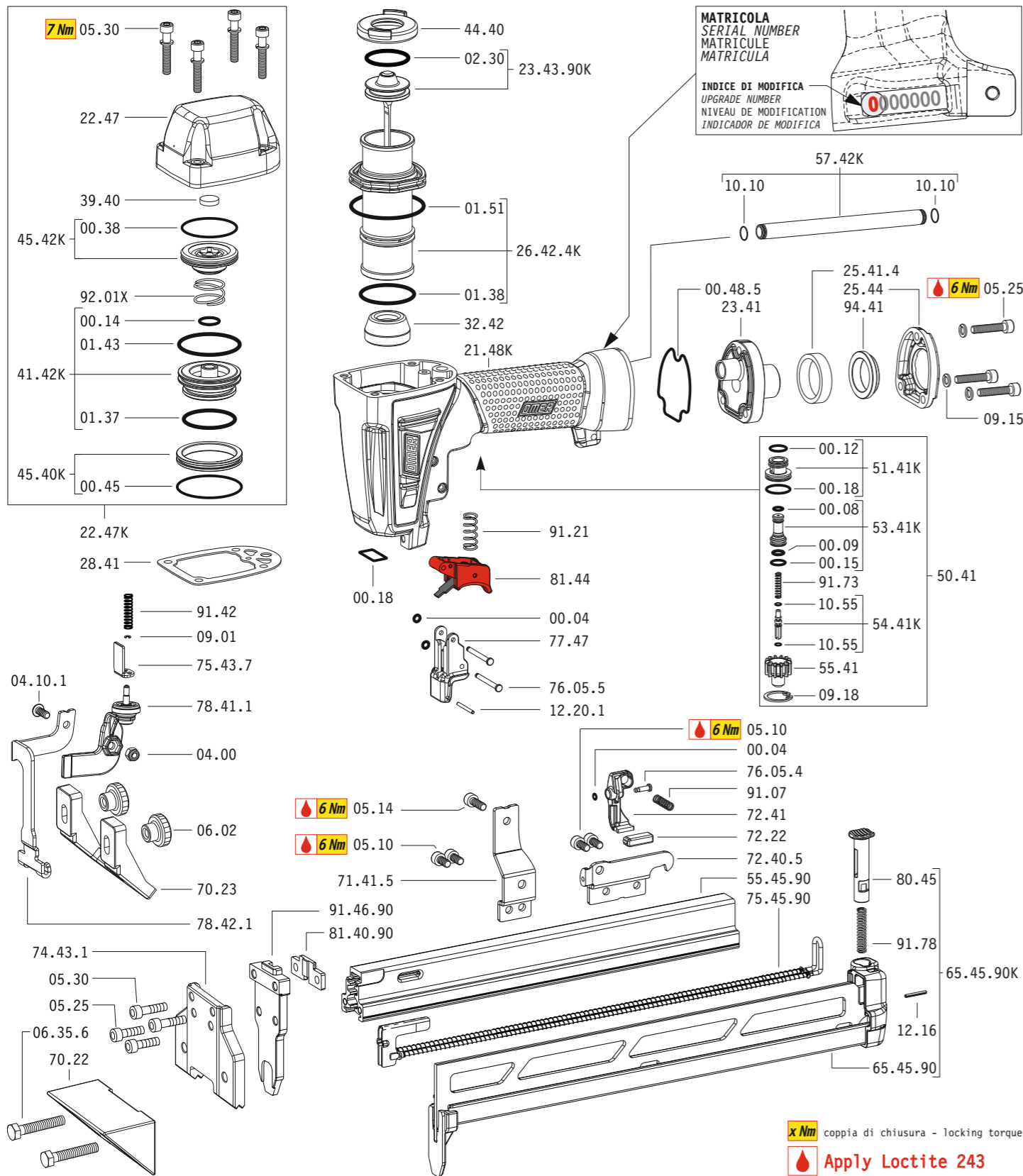
**90**

$\square$  1,00x1,25

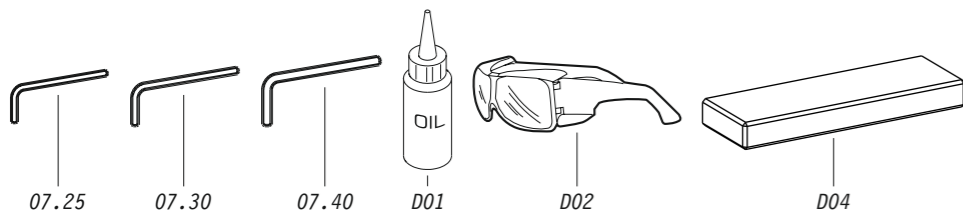


Crown: .217" (1/4")  
Gauge: 18

1447050FL2\_90438FL2\_4\_rev22\_30/07/2025\_MH



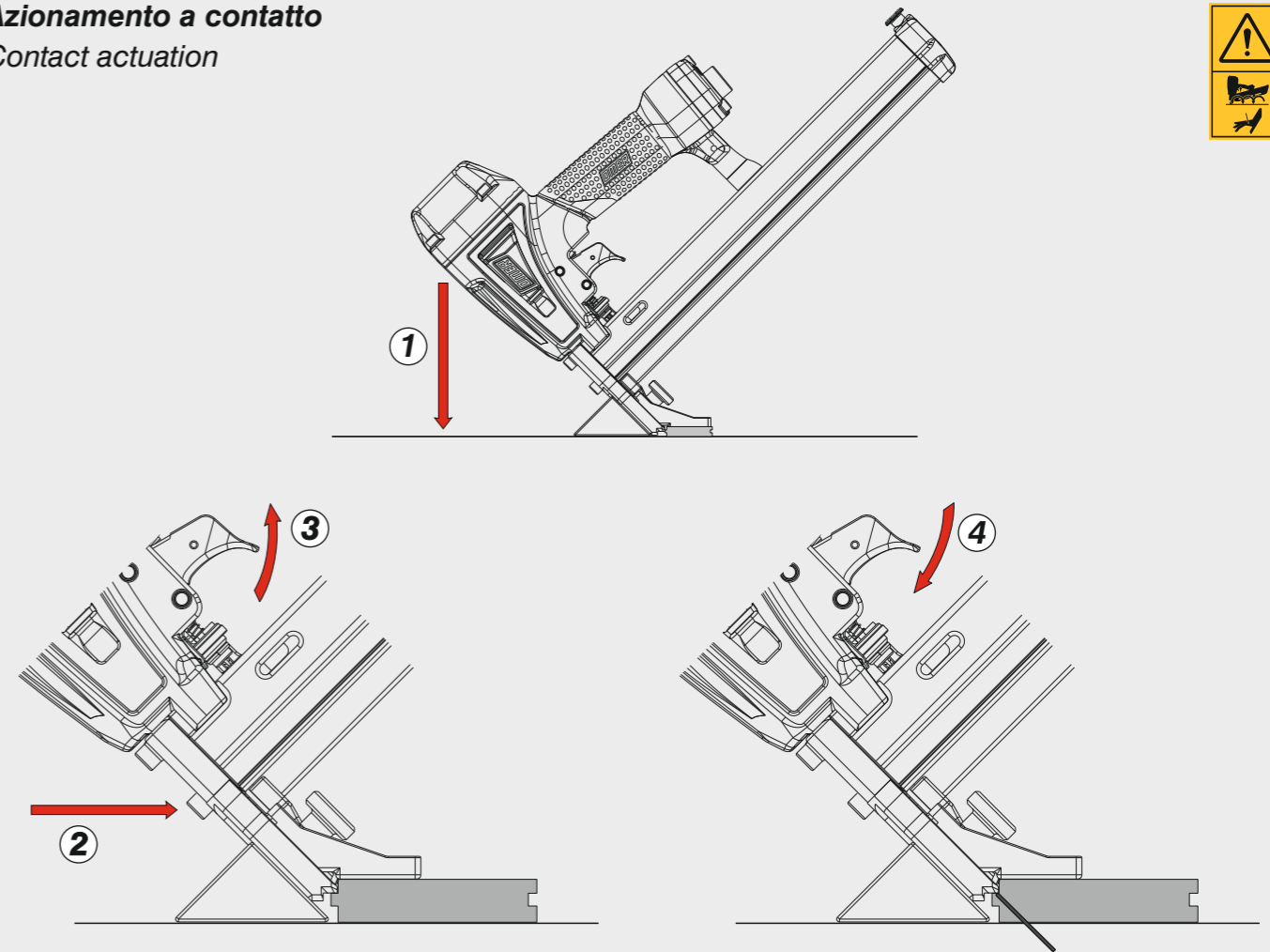
Dotazioni - Equipment - Ausstattung - Outillage - Dotaciones - Εξοπλισμός  
 Dotações - Uitrusting - Donanımlar - Utrustning - Vybavení - Vybava



**90.438 FL2**

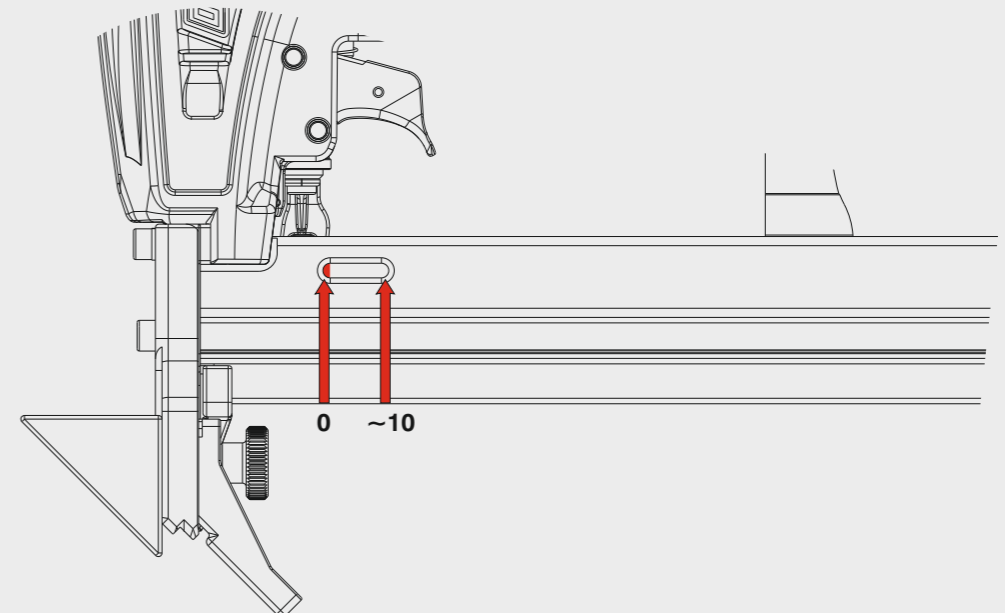
cod. 1447050FL2

**Azionamento a contatto**  
 Contact actuation

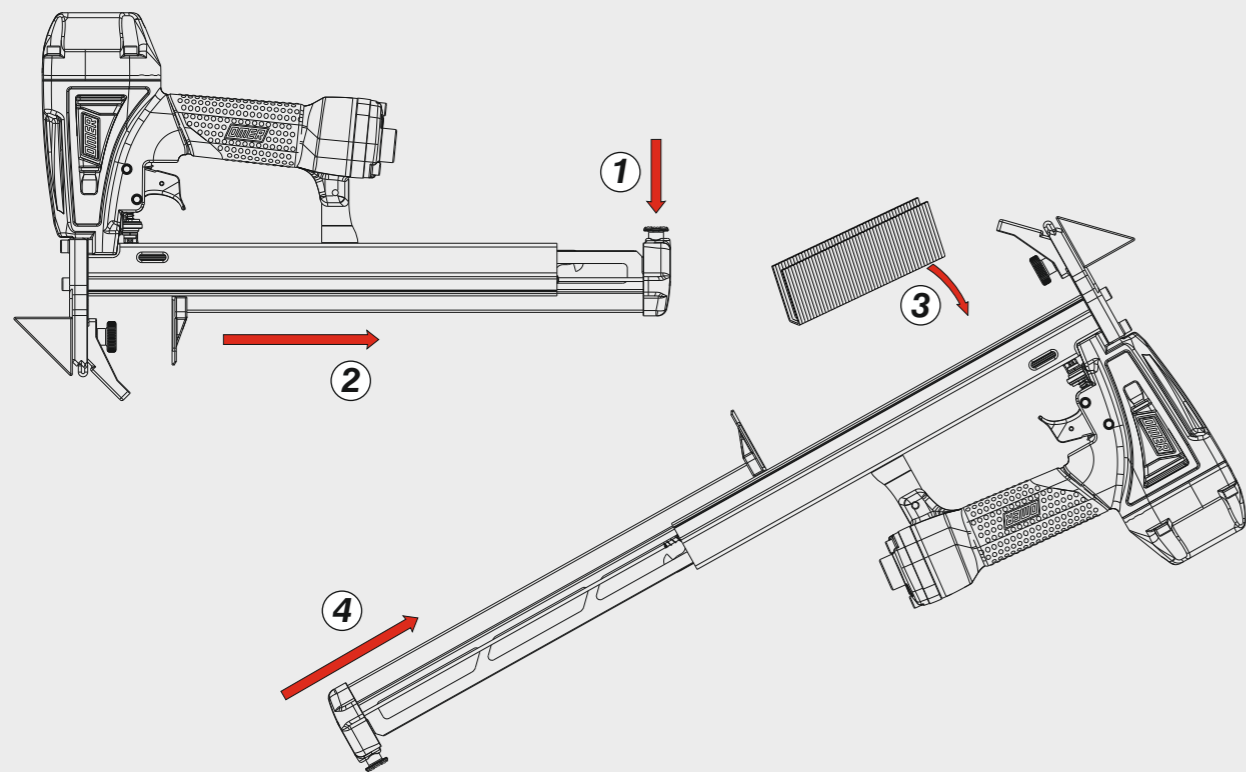


Caratteristiche - Features - Merkmale - Caractéristiques - Características - Χαρακτηριστικά  
 Características - Kenmerken - Özellikler - Vlastnosti - Vlastnosti

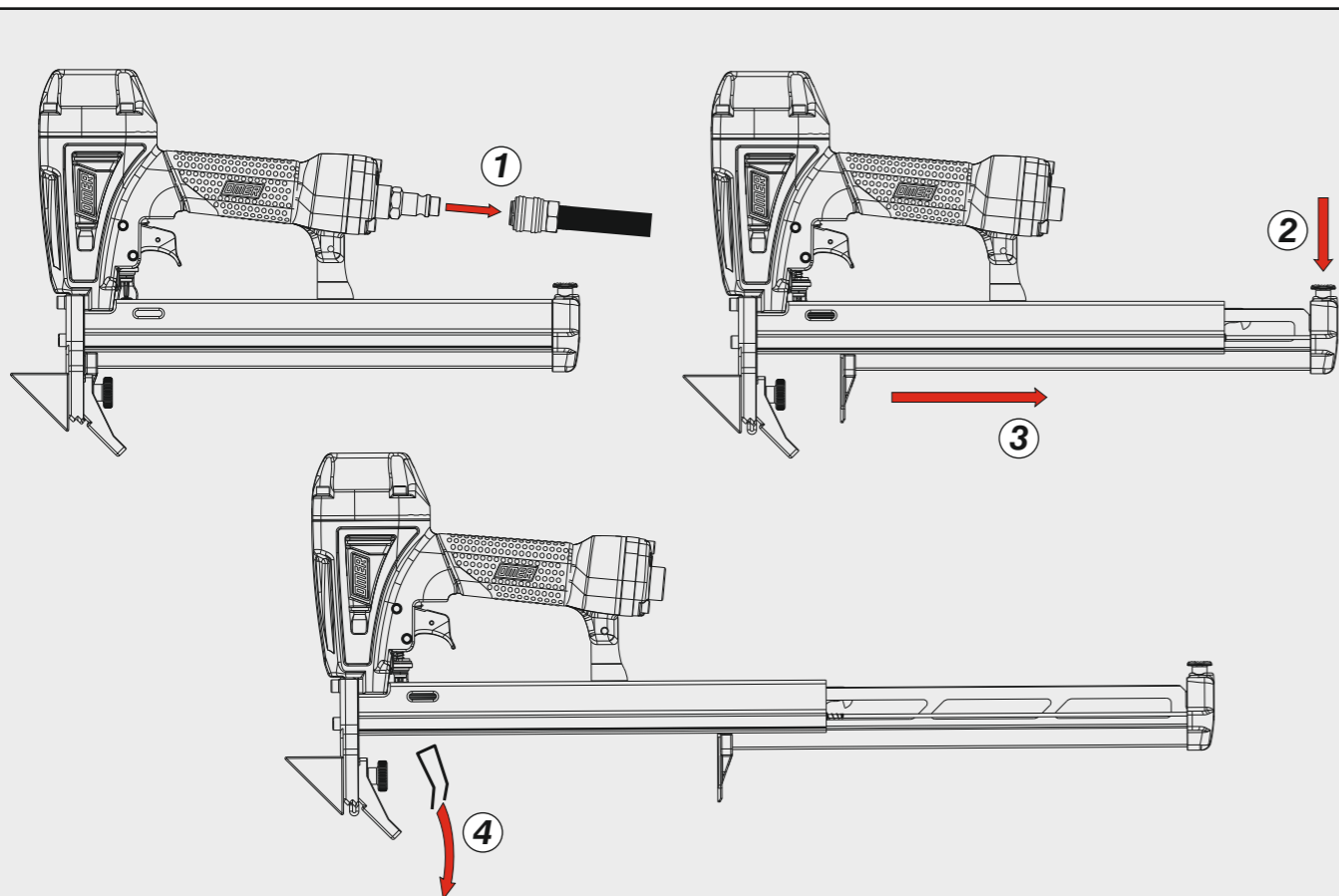
**Segnalatore punti rimanenti**  
 Fastener quantity indicator



**Caricamento da sotto**  
Bottom load magazine

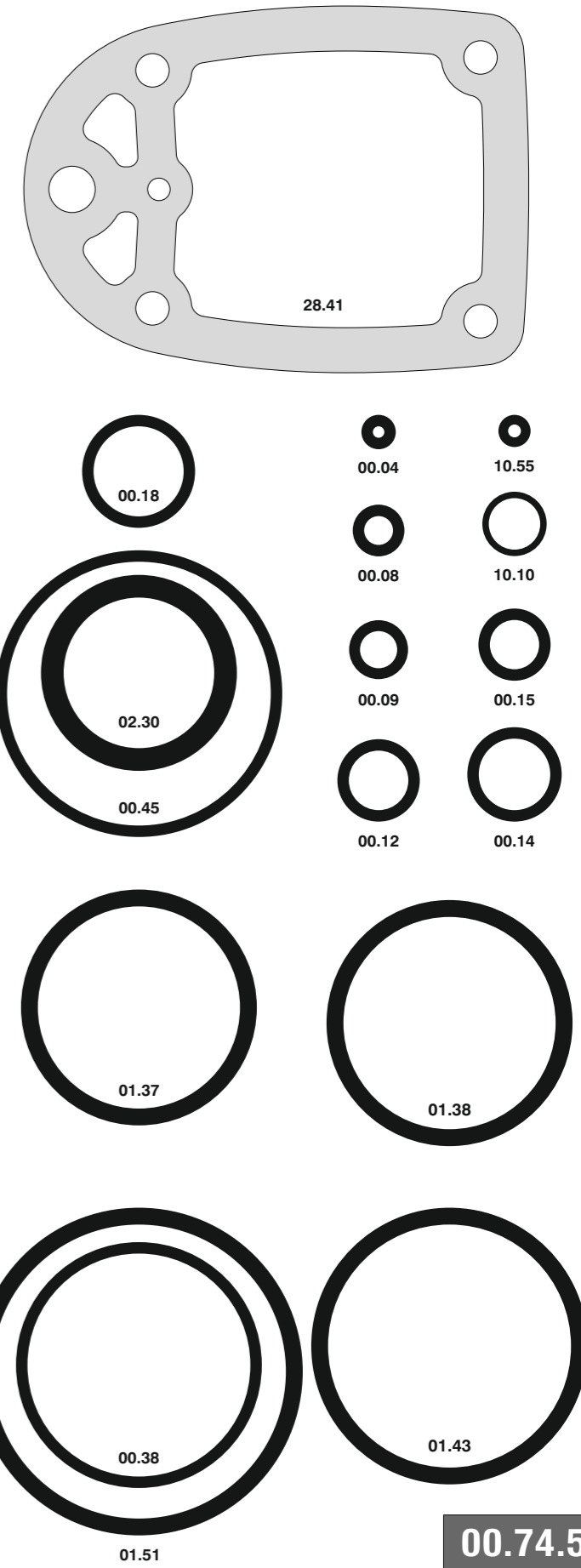


**Disinceppamento - Jam clearing - Staubeseitigung - Décoincement - Desatascamiento - Απεμπλοκή**  
Desencravamento - Deblokkering bij vastlopen - Sıkışma giderme - Rensning av igensättningar - Uvolnění - Uvol'nenie

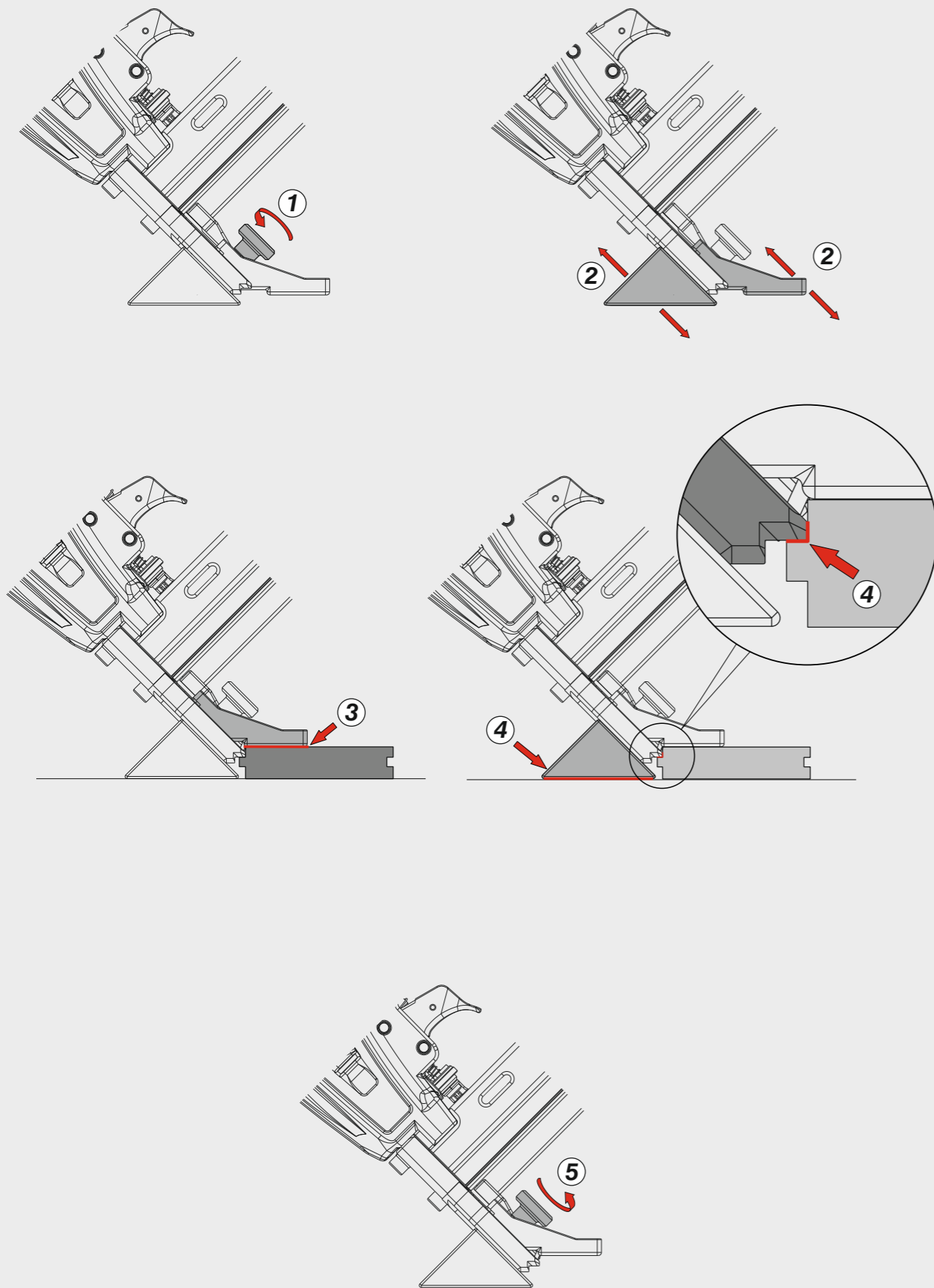


Cod.	Descrizione	Description
00.04	O-Ring	O-Ring
00.08	O-Ring	O-Ring
00.09	O-Ring	O-Ring
00.12	O-Ring	O-Ring
00.14	O-Ring	O-Ring
00.15	O-Ring	O-Ring
00.18	O-Ring	O-Ring
00.38	O-Ring	O-Ring
00.45	O-Ring	O-Ring
00.48.5	Guarnizione	Gasket
01.37	O-Ring	O-Ring
01.38	O-Ring	O-Ring
01.43	O-Ring	O-Ring
01.51	O-Ring	O-Ring
02.30	O-Ring	O-Ring
04.00	Dado	Nut
04.10.1	Vite	Screw
05.10	Vite	Screw
05.14	Vite	Screw
05.25	Vite	Screw
05.30	Vite	Screw
06.02	Pomello	Knob
06.35.6	Vite	Screw
07.25	Chiave esagonale	Hex. bar wrench
07.30	Chiave esagonale	Hex. bar wrench
07.40	Chiave esagonale	Hex. bar wrench
09.01	Anello elastico	Elastic ring
09.15	Rondella	Washer
09.18	Anello elastico	Elastic ring
10.10	O-Ring	O-Ring
10.55	O-Ring	O-Ring
12.16	Spina	Pin
12.20.1	Spina	Pin
21.48K	Corpo	Body
22.47K	Testa completa	Head unit
22.47	Testa	Head
23.41	Fondello	Case back
25.41.4	Silenziatore	Silencer
25.44	Deflettore	Exhaust deflector
26.42.4K	Cilindro	Cylinder
28.41	Guarnizione	Gasket
32.42	Ammortizzatore	Bumper
39.40	Guarnizione	Gasket
41.42K	Valvola	Valve
44.40	Guarnizione	Gasket
45.40K	Anello valvola	Ring
45.42K	Anello testa	Ring
50.41	Pulsante completo	Trigger valve assy
51.41K	Boccola	Valve housing
53.41K	Pistone servovalvola	Valve piston
54.41K	Pulsante	Trigger valve
55.41	Raccordo pulsante	Bush
57.42K	Tubo di scarico	Exhaust pipe
70.22	Supporto	Support
70.23	Appoggio	Rest
71.41.5	Reggicaricatore	Support
72.22	Fermo carrello	Slider stop
72.40.5	Gancio chiusura	Closing hook
72.41	Fermo carrello	Slider stop
74.43.1	Piastra	Plate
75.43.7	Rinvio sicura	Referral safety
76.05.4	Perno	Pin
76.05.5	Perno	Pin
77.47	Guida sicura	Safety guide
78.41.1	Sicura	Safety
78.42.1	Sicura	Safety
80.45	Grilletto	Trigger
81.44	Grilletto comando	Trigger
91.07	Molla	Spring
91.21	Molla	Spring
91.42	Molla	Spring
91.73	Molla	Spring
91.78	Molla	Spring
92.01X	Molla	Spring
94.41	Boccola	Bushing
23.43.90K	Battente	Driver
55.45.90	Caricatore	Magazine
65.45.90K	Carrello completo	Slider unit
65.45.90	Carrello	Slider
75.45.90	Spingipunto	Pusher
81.40.90	Controtestina	Nose
91.46.90	Testina	Nose plate
D01	Bocchetta olio	Oiler
D02	Occhiali protettivi	Protective goggles
D04	Blocco Plastica	Plastic block

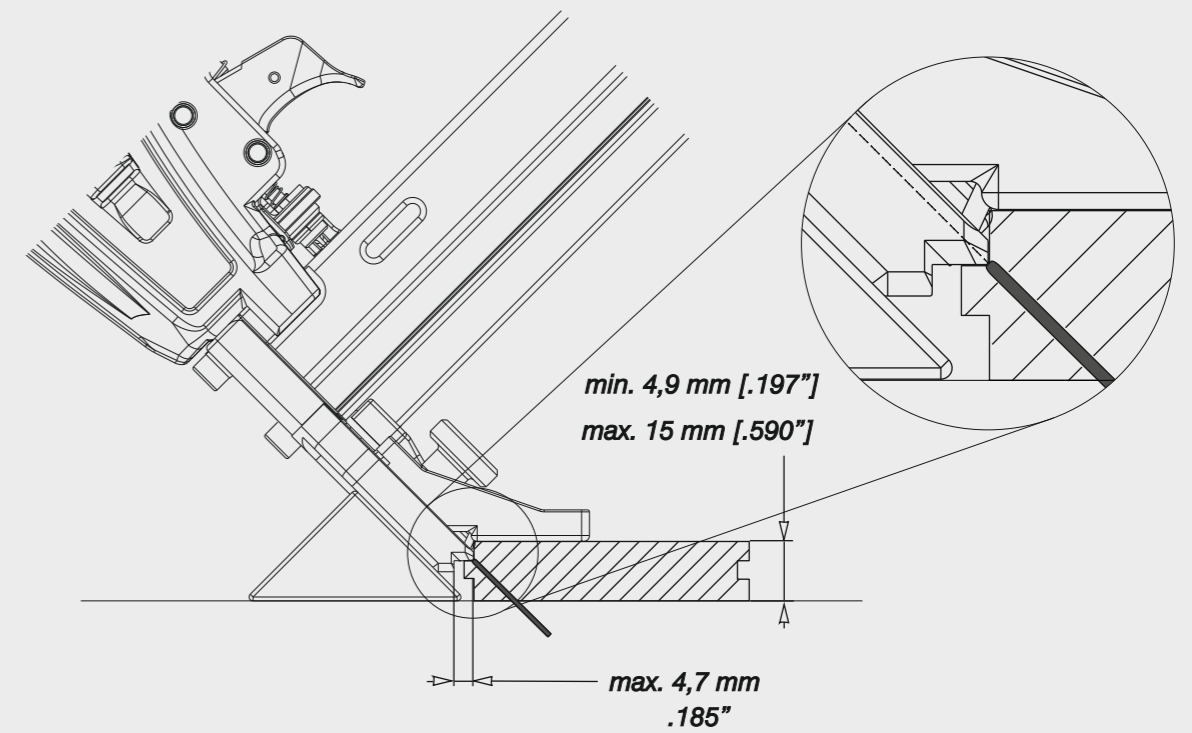
Guarnizioni - O-Rings - Dichtungen - Joints - Juntas - Δακτύλιος στεγανοποίησης - Vedantes - O-ringen - Contalar - O-ringar - Tésnéni - Tesnenia





## Regolazione del distanziale - Foot adjustment



## Regolazione del distanziale - Foot adjustment



	
3/8" - 10 mm Engineered wood flooring	25 mm   1" 28 mm   1-1/8" 32 mm   1-1/4"
1/2" - 12 mm Engineered wood flooring	28 mm   1-1/8" 32 mm   1-1/4" 38 mm   1-1/2"
5/8" - 15 mm Engineered wood flooring	32 mm   1-1/4" 38 mm   1-1/2"